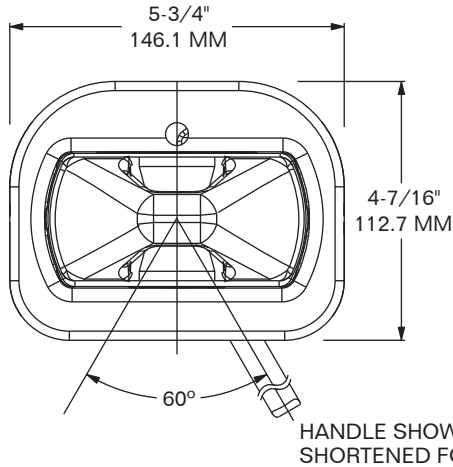
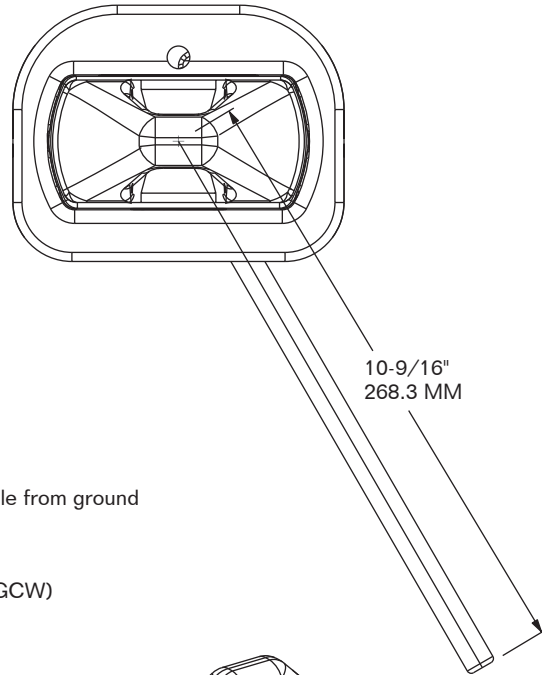


**DESIGNED FOR USE ON DOUBLE-STACK RAIL CARS.
UNCONDITIONAL AAR APPROVAL PER AAR-M-998-2008**

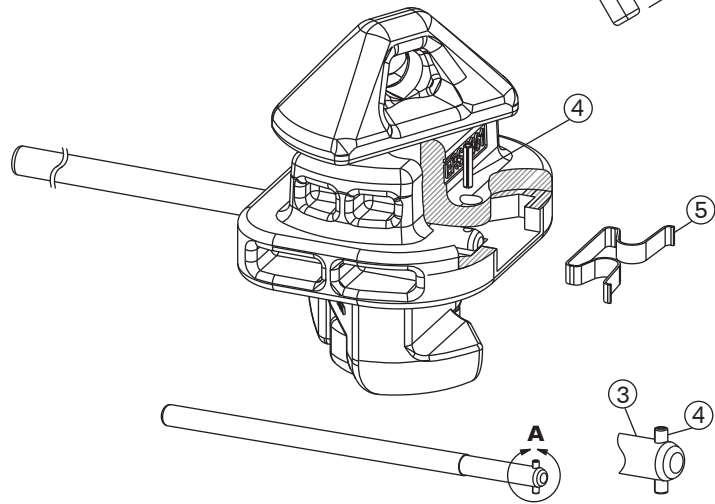
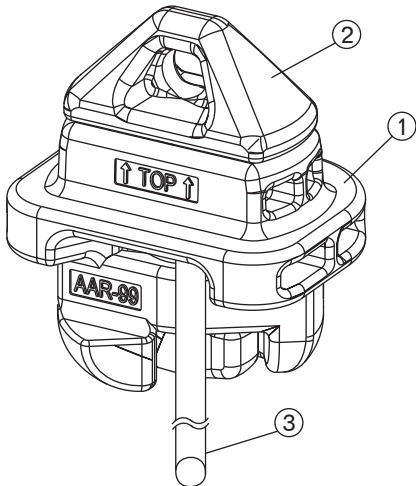
MODEL 6601-6961-L



SHOWN WITH FULL-LENGTH HANDLE



- Locks to the left
- Fits both standard 96"- and 102"-wide containers
- Handle can be operated from side with aluminum pole from ground
- Fixed-base design eliminates bolts and nuts
- Cannot be fitted upside down
- Designed for 80,000 lbs. Gross Container Weight (GCW)



ITEM	MODEL	DESCRIPTION	MATERIAL	FINISH
1	6601-6961-1-L	HOUSING	CAST STEEL	HOT-DIP GALVANIZED
2	6601-6961-2	PIN	FORGED STEEL	HOT-DIP GALVANIZED
3	6601-6961-4	HANDLE	STEEL	HOT-DIP GALVANIZED
4	6601-4757-SS	SPLIT ROLL PIN	CARBON STEEL	ZINC-PLATED
5	5005-2936-5	SPRING	CARBON STEEL	SELF-COLOR

WEIGHT: 13.9 LBS / 6.3 Kg

