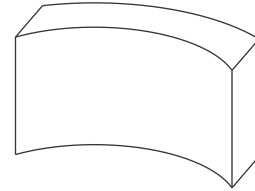
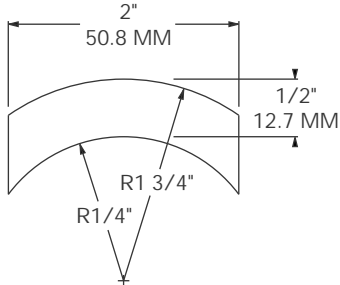
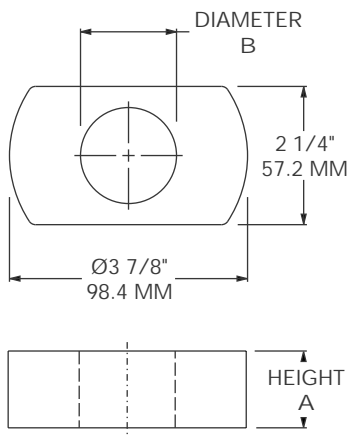


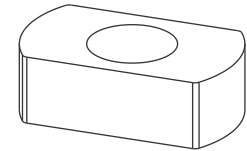
**MODEL 1109-1484**



SUB FOR: PENZ 21-04  
 MATERIAL: CAST STEEL  
 FINISH: PRIMER  
 WEIGHT: 0.34 LBS / 0.15 Kg

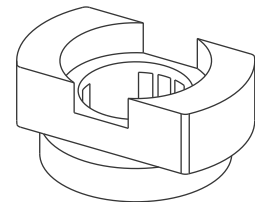
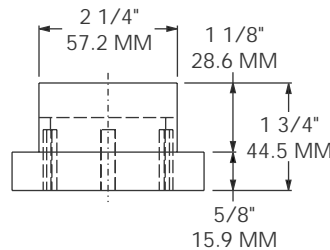
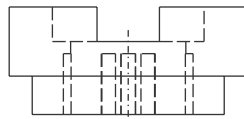
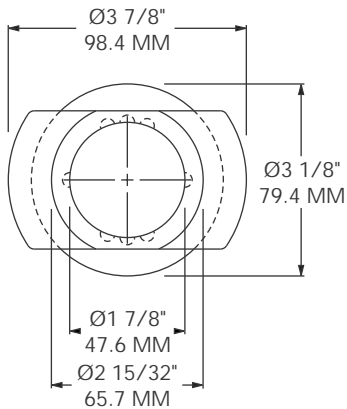


| MODEL     | A       | B        | WEIGHT             | SUB FOR    |
|-----------|---------|----------|--------------------|------------|
| 1109-1490 | 1"      | 1 9/16"  | 1.75 LBS / 0.79 Kg | PENZ 21-09 |
| 1109-1491 | 1 1/8"  | 1 9/16"  | 1.9 LBS / 0.86 Kg  | PENZ 21-10 |
| 1109-1492 | 1 1/4"  | 1 9/16"  | 2.13 LBS / 0.97 Kg | PENZ 21-11 |
| 1109-1493 | 1 3/8"  | 1 9/16"  | 2.39 LBS / 1.08 Kg | PENZ 21-12 |
| 1109-1494 | 1 7/16" | 1 9/16"  | 2.45 LBS / 1.11 Kg | PENZ 21-13 |
| 1109-1495 | 1 1/2"  | 1 9/16"  | 2.65 LBS / 1.20 Kg | PENZ 21-14 |
| 1109-1496 | 1 5/8"  | 1 9/16"  | 2.80 LBS / 1.27 Kg | PENZ 21-15 |
| 1109-1497 | 1 3/8"  | 1 25/32" | 2.15 LBS / 0.97 Kg | PENZ 21-16 |
| 1109-1498 | 1 1/8"  | 2 1/32"  | 1.5 LBS / 0.68 Kg  | PENZ 21-17 |
| 1109-1499 | 1 1/4"  | 2 1/32"  | 1.7 LBS / 0.77 Kg  | PENZ 21-18 |
| 1109-1500 | 1 3/8"  | 2 1/32"  | 1.9 LBS / 0.86 Kg  | PENZ 21-19 |
| 1109-1501 | 1 7/16" | 2 1/32"  | 2.0 LBS / 0.91 Kg  | PENZ 21-20 |
| 1109-1502 | 1 1/2"  | 2 1/32"  | 2.0 LBS / 0.91 Kg  | PENZ 21-21 |
| 1109-1503 | 1 5/8"  | 2 1/32"  | 2.2 LBS / 0.99 Kg  | PENZ 21-22 |
| 1109-1504 | 1 1/2"  | 1 25/32" | 2.3 LBS / 1.04 Kg  | PENZ 21-23 |
| 1109-1505 | 1 1/4"  | 1 11/16" | 2.0 LBS / 0.91 Kg  | PENZ 21-28 |



MATERIAL: CAST STEEL  
 FINISH: PRIMER

**MODEL 1109-1566**



SUB FOR: PENZ 21-24  
 MATERIAL: CAST STEEL  
 FINISH: PRIMER  
 WEIGHT: 2.05 LBS / 0.93 Kg

1100

**MODEL 1109-1567**

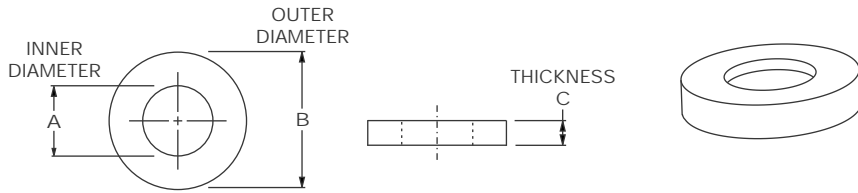
**SUB FOR: PENZ 21-25**  
**MATERIAL: CAST STEEL FINISH: PRIMER**  
**WEIGHT: 3.15 LBS / 1.43 Kg**

**MODEL 1109-1667**

**WORKS WITH: BUFFERS 1101-3133, 1101-3590, 1101-1423**  
**NON-RETRACTABLE TWISTLOCKS**  
**MATERIAL: CAST STEEL FINISH: PRIMER WEIGHT: 1.70 LBS / 0.77 Kg**

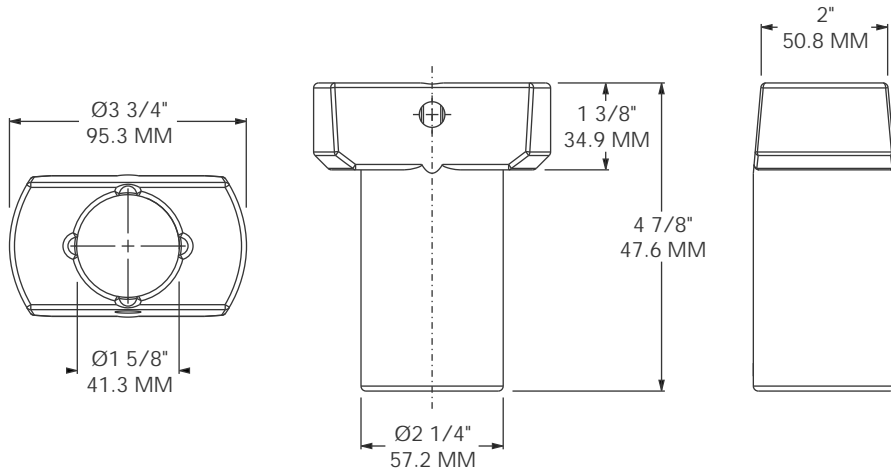
**MODEL 1109-1845**

**SUB FOR: PENZ 21-32**  
**MATERIAL: CAST STEEL FINISH: PRIMER**  
**WEIGHT: 2.3 LBS / 1.0 Kg**

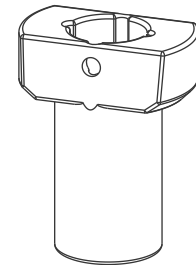


MATERIAL: STEEL  
FINISH: PRIMER

| MODEL     | A                 | B                  | C              | WEIGHT           | SUB FOR    |
|-----------|-------------------|--------------------|----------------|------------------|------------|
| 1109-2048 | 2" / 50.8 MM      | 3 7/8" / 98.4 MM   | 1/4"/6.4 MM    | 0.61 LBS/0.28 Kg | PENZ 21-09 |
| 1109-4515 | 1 9/16" / 39.7 MM | 3 7/16" / 87.3 MM  | 3/16"/4.8 MM   | 0.10 LBS/0.05 Kg |            |
| 1109-4517 | 1 9/16" / 39.7 MM | 2 11/32" / 59.5 MM | 19/32"/15.1 MM | 0.40 LBS/0.18 Kg |            |
| 1109-4527 | 1 9/16" / 39.7 MM | 2 11/32" / 59.5 MM | 1/8"/3.2 MM    | 0.08 LBS/0.04 Kg |            |
| 1109-4528 | 1 9/16" / 39.7 MM | 2 11/32" / 59.5 MM | 3/8"/9.5 MM    | 0.27 LBS/0.12 Kg |            |
| 1109-1632 | 1 9/16" / 39.7 MM | 2 1/2" / 63.5 MM   | 5/8"/15.9 MM   | 0.52 LBS/0.24 Kg | PENZ 40-10 |
| 1109-1762 | 1 9/16" / 39.7 MM | 2" / 50.8 MM       | 1 1/4"/31.8 MM | 0.43 LBS/0.20 Kg | PENZ 40-01 |
| 1109-1763 | 1 9/16" / 39.7 MM | 2" / 50.8 MM       | 4"/101.6 MM    | 1.39 LBS/0.63 Kg | PENZ 40-06 |

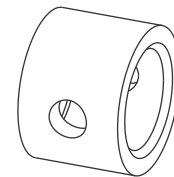
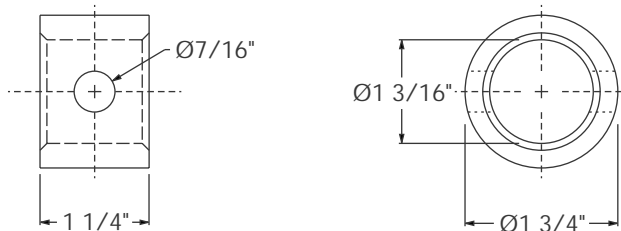


**MODEL 1109-2842**



SUB FOR: PENZ 21-31  
MATERIAL: CAST STEEL  
FINISH: PRIMER  
WEIGHT: 3.85 LBS / 1.74 Kg

**MODEL 1109-7360**  
LOCKING PIN GUIDE BOSS



SUB FOR: PENZ 40-15  
MATERIAL: FAB STEEL  
FINISH: PRIMER  
WEIGHT: 0.430 LBS / 0.195 Kg