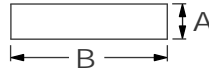




# ALUMINUM FLAT BARS



MODEL	A	B	LENGTH	WEIGHT
1313-2296-6	1/8" / 3.2 MM	2" / 50.8 MM	6' / 1,829 MM	1.74 LBS / 0.78 Kg
1313-2296	1/8" / 3.2 MM	2" / 50.8 MM	12' / 3,658 MM	3.5 LBS / 1.6 Kg
1313-2297	1/8" / 3.2 MM	2" / 50.8 MM	20' / 6,096 MM	5.8 LBS / 2.6 Kg
1313-2298	1/8" / 3.2 MM	3" / 76.2 MM	12' / 3,658 MM	5.3 LBS / 2.4 Kg
1313-2299	1/8" / 3.2 MM	3" / 76.2 MM	20' / 6,096 MM	8.8 LBS / 4.0 Kg
1313-2300	1/8" / 3.2 MM	4" / 101.6 MM	12' / 3,658 MM	7.1 LBS / 3.2 Kg
1313-2301	1/8" / 3.2 MM	4" / 101.6 MM	20' / 6,096 MM	11.8 LBS / 5.3 Kg
1313-6810	3/16" / 4.76 MM	1" / 25.4 MM	12' / 3,658 MM	2.6 LBS / 1.2 Kg
1313-6811	3/16" / 4.76 MM	1" / 25.4 MM	20' / 6,096 MM	4.4 LBS / 2.0 Kg
1313-6812	3/16" / 4.76 MM	2" / 50.8 MM	12' / 3,658 MM	5.3 LBS / 2.4 Kg
1313-6813	3/16" / 4.76 MM	2" / 50.8 MM	20' / 6,096 MM	8.8 LBS / 4.0 Kg
1313-6814	3/16" / 4.76 MM	3" / 76.2 MM	12' / 3,658 MM	8.0 LBS / 3.6 Kg
1313-6815	3/16" / 4.76 MM	3" / 76.2 MM	20' / 6,096 MM	13.2 LBS / 6.0 Kg
1313-6816	3/16" / 4.76 MM	4" / 101.6 MM	12' / 3,658 MM	10.6 LBS / 4.8 Kg
1313-6817	3/16" / 4.76 MM	4" / 101.6 MM	20' / 6,096 MM	17.6 LBS / 8.0 Kg
1313-6818	3/16" / 4.76 MM	5" / 127 MM	12' / 3,658 MM	13.2 LBS / 6.0 Kg
1313-6819	3/16" / 4.76 MM	5" / 127 MM	20' / 6,096 MM	22.0 LBS / 10.0 Kg
1313-2400	1/4" / 6.35 MM	1" / 25.4 MM	12' / 3,658 MM	3.5 LBS / 1.6 Kg
1313-2401	1/4" / 6.35 MM	1" / 25.4 MM	20' / 6,096 MM	5.8 LBS / 2.6 Kg
1313-2402	1/4" / 6.35 MM	2" / 50.8 MM	12' / 3,658 MM	7.1 LBS / 3.2 Kg
1313-2403	1/4" / 6.35 MM	2" / 50.8 MM	20' / 6,096 MM	11.8 LBS / 5.4 Kg
1313-2404	1/4" / 6.35 MM	3" / 76.2 MM	12' / 3,658 MM	10.6 LBS / 4.8 Kg
1313-2405	1/4" / 6.35 MM	3" / 76.2 MM	20' / 6,096 MM	17.6 LBS / 8.0 Kg
1313-2406	1/4" / 6.35 MM	4" / 101.6 MM	12' / 3,658 MM	14.0 LBS / 6.4 Kg
1313-2407	1/4" / 6.35 MM	4" / 101.6 MM	20' / 6,096 MM	23.4 LBS / 10.6 Kg
1313-2408	1/4" / 6.35 MM	5" / 127 MM	12' / 3,658 MM	17.5 LBS / 7.9 Kg
1313-2409	1/4" / 6.35 MM	5" / 127 MM	20' / 6,096 MM	29.2 LBS / 13.2 Kg
1313-2410	1/4" / 6.4 MM	6" / 152.4 MM	12' / 3,658 MM	21.1 LBS / 9.6 Kg
1313-2411	1/4" / 6.4 MM	6" / 152.4 MM	20' / 6,096 MM	35.2 LBS / 16.0 Kg
1313-2412	5/16" / 7.94 MM	2" / 50.8 MM	12' / 3,658 MM	8.8 LBS / 4.0 Kg
1313-2413	5/16" / 7.94 MM	2" / 50.8 MM	20' / 6,096 MM	14.6 LBS / 6.6 Kg
1313-2414	5/16" / 7.94 MM	3" / 76.2 MM	12' / 3,658 MM	13.2 LBS / 6.0 Kg
1313-2415	5/16" / 7.94 MM	3" / 76.2 MM	20' / 6,096 MM	22.0 LBS / 10.0 Kg
1313-2416	5/16" / 7.94 MM	3 1/4" / 82.55 MM	12' / 3,658 MM	14.3 LBS / 6.5 Kg
1313-2417	5/16" / 7.94 MM	3 1/4" / 82.55 MM	20' / 6,096 MM	23.8 LBS / 10.8 Kg
1313-2418	5/16" / 7.94 MM	3 3/4" / 95.25 MM	12' / 3,658 MM	16.4 LBS / 7.5 Kg
1313-2419	5/16" / 7.94 MM	3 3/4" / 95.25 MM	20' / 6,096 MM	27.4 LBS / 12.4 Kg
1313-2420	5/16" / 7.94 MM	4" / 101.6 MM	12' / 3,658 MM	17.5 LBS / 7.9 Kg
1313-2421	5/16" / 7.94 MM	5" / 127 MM	12' / 3,658 MM	22.0 LBS / 10.0 Kg
1313-6284	3/8" / 9.5 MM	1" / 25.4 MM	12' / 3,658 MM	5.3 LBS / 2.4 Kg
1313-6285	3/8" / 9.5 MM	1" / 25.4 MM	20' / 6,096 MM	8.8 LBS / 4.0 Kg
1313-6286	3/8" / 9.5 MM	2" / 50.8 MM	12' / 3,658 MM	10.6 LBS / 4.8 Kg
1313-6287	3/8" / 9.5 MM	2" / 50.8 MM	20' / 6,096 MM	17.6 LBS / 8.0 Kg
1313-6288	3/8" / 9.5 MM	2 1/2" / 63.5 MM	12' / 3,658 MM	13.2 LBS / 6.0 Kg
1313-6289	3/8" / 9.5 MM	2 1/2" / 63.5 MM	20' / 6,096 MM	22.0 LBS / 10.0 Kg
1313-6290	3/8" / 9.5 MM	3" / 76.2 MM	12' / 3,658 MM	15.8 LBS / 7.2 Kg
1313-6685	3/8" / 9.5 MM	3" / 76.2 MM	20' / 6,096 MM	26.4 LBS / 12.0 Kg
1313-6686	3/8" / 9.5 MM	4" / 101.6 MM	12' / 3,658 MM	21.1 LBS / 9.6 Kg
1313-6687	3/8" / 9.5 MM	4" / 101.6 MM	20' / 6,096 MM	35.2 LBS / 16.0 Kg
1313-6688	3/8" / 9.5 MM	5" / 127 MM	12' / 3,658 MM	26.3 LBS / 11.9 Kg
1313-6689	3/8" / 9.5 MM	5" / 127 MM	20' / 6,096 MM	43.8 LBS / 19.9 Kg
1313-6690	1/2" / 12.7 MM	1" / 25.4 MM	12' / 3,658 MM	7.1 LBS / 3.2 Kg
1313-6691	1/2" / 12.7 MM	1" / 25.4 MM	20' / 6,096 MM	11.8 LBS / 5.4 Kg
1313-6692	1/2" / 12.7 MM	2" / 50.8 MM	12' / 3,658 MM	14.0 LBS / 6.4 Kg
1313-6693	1/2" / 12.7 MM	2" / 50.8 MM	20' / 6,096 MM	23.4 LBS / 10.6 Kg
1313-6694	1/2" / 12.7 MM	3" / 76.2 MM	12' / 3,658 MM	21.1 LBS / 9.6 Kg
1313-6695	1/2" / 12.7 MM	3" / 76.2 MM	20' / 6,096 MM	35.2 LBS / 16.0 Kg
1313-6696	1/2" / 12.7 MM	4" / 101.6 MM	12' / 3,658 MM	28.3 LBS / 12.8 Kg
1313-6697	1/2" / 12.7 MM	4" / 101.6 MM	20' / 6,096 MM	46.8 LBS / 21.2 Kg
1313-6698	1/2" / 12.7 MM	5" / 127 MM	12' / 3,658 MM	35.2 LBS / 16.0 Kg

1300

**BUFFERS USA INC**

"The Intermodal Hardware Specialists"



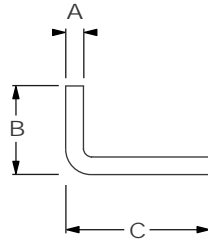
904-696-0010

FAX 904-696-0019

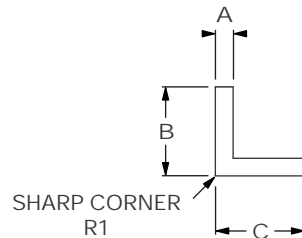
E-mail: sales@buffersusa.com

1313-1

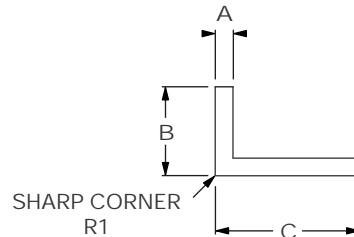
1300



MODEL	A	B	C	LENGTH	WEIGHT
1313-2261	1/8"	3 1/4"	5 1/2"	7' 6"	9.3 LBS / 4.2 Kg
1313-2293	1/8"	2"	3"	10'	7.0 LBS / 3.2 Kg
1313-2311	3/16"	1"	2"	12'	7.6 LBS / 3.4 Kg



MODEL	A	B	C	LENGTH	WEIGHT
1313-6702	1/8"	1"	1"	12'	3.36 LBS / 1.52 Kg
1313-6703	1/8"	2"	2"	12'	6.97 LBS / 3.16 Kg
1313-6704	1/8"	3"	3"	12'	10.57 LBS / 4.79 Kg
1313-6705	3/16"	1"	1"	12'	4.91 LBS / 2.22 Kg
1313-6706	3/16"	2"	2"	12'	10.31 LBS / 4.67 Kg
1313-6707	3/16"	3"	3"	12'	15.65 LBS / 7.09 Kg
1313-6708	1/4"	1"	1"	12'	6.31 LBS / 2.86 Kg
1313-6709	1/4"	2"	2"	12'	13.55 LBS / 6.14 Kg
1313-6718	1/4"	3"	3"	12'	20.69 LBS / 9.38 Kg
1313-6719	1/4"	4"	4"	12'	27.91 LBS / 12.65 Kg



MODEL	A	B	C	LENGTH	WEIGHT
1313-6720	1/8"	1"	2"	12'	5.17 LBS / 2.34 Kg
1313-6721	1/8"	1"	3"	12'	6.97 LBS / 3.16 Kg
1313-6722	1/8"	1"	4"	12'	8.77 LBS / 3.97 Kg
1313-6723	1/8"	2"	3"	12'	8.77 LBS / 3.97 Kg
1313-6724	1/8"	2"	4"	12'	10.57 LBS / 4.79 Kg
1313-6725	1/8"	2"	5"	12'	12.37 LBS / 5.61 Kg
1313-6726	3/16"	1"	2"	12'	7.57 LBS / 3.43 Kg
1313-6727	3/16"	1"	3"	12'	10.31 LBS / 4.67 Kg
1313-6728	3/16"	2"	3"	12'	12.62 LBS / 5.72 Kg
1313-6729	1/4"	2"	3"	12'	17.54 LBS / 7.95 Kg
1313-6743	1/4"	2"	4"	12'	20.71 LBS / 9.39 Kg
1313-6744	1/4"	2"	5"	12'	24.31 LBS / 11.02 Kg
1313-6745	1/4"	3"	4"	12'	24.16 LBS / 10.95 Kg
1313-6746	1/4"	3"	5"	12'	27.78 LBS / 12.60 Kg
1313-6747	1/4"	3"	6"	12'	31.49 LBS / 14.28 Kg

MATERIAL: EXTRUDED ALUMINUM ALLOY 6053-T6 OR 6061-T6