

MODEL 1501-2448

FITS: CHASSIS KING
 MATERIAL: STD ALLOY STEEL
 FINISH: SELF-COLOR
 WEIGHT: 11.2 LBS / 5.08 Kg

MODEL 1501-2632
MODEL 1501-2632-KIT

CLEVIS PIN
MODEL 1501-4611

SUB FOR: PENZ 17-16
 MATERIAL: STD CARBON STEEL FINISH: ZINC-PLATED
 WEIGHT: 0.054 LBS / 0.025 Kg

SLIDER PIN
MODEL 1501-2632

SUB FOR: PENZ 35-01 FITS: STRICK
 MATERIAL: ALLOY STEEL FINISH: PRIMER
 WEIGHT: 2.6 LBS / 1.18 Kg

COTTER PIN
MODEL 1501-4591-SS
1/8" x 3/4"

SUB FOR: PENZ 17-17
 MATERIAL: STAINLESS STEEL FINISH: SELF-COLOR
 WEIGHT: 0.05 LBS / 0.03 Kg

SPRING
MODEL 1501-4612

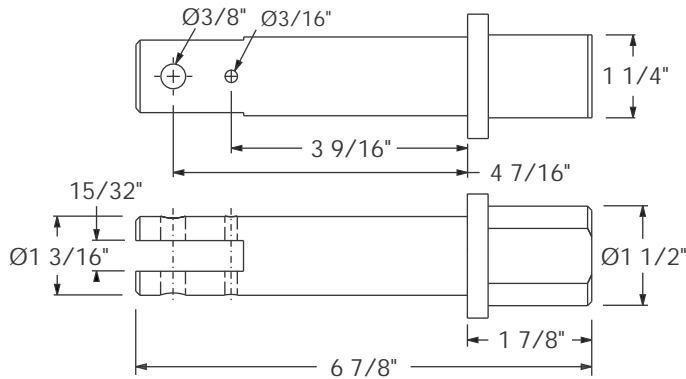
SUB FOR: PENZ 50-23 FITS: STRICK
 MATERIAL: STD CARBON STEEL FINISH: PRIMER
 WEIGHT: 0.51 LBS / 0.23 Kg

TO ORDER THE COMPLETE ASSEMBLY USE MODEL 1501-2632-KIT WHICH INCLUDES 1501-2632 SLIDER PIN, 1501-4611 CLEVIS PIN, 1501-4612 SPRING, AND 1501-4591-SS COTTER PIN.

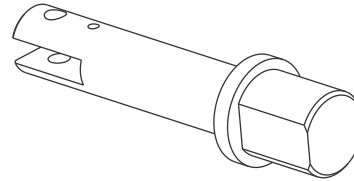
SUB BUFFERS 1501-2632-KIT FOR: PENZ 35-01-KIT
 WEIGHT KIT: 3.17 LBS / 1.44 Kg

SLIDER PINS

1500



MODEL 1501-2635
MODEL 1501-2635-KIT



SLIDER PIN
MODEL 1501-2635

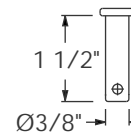
SUB FOR: PENZ 35-021 FITS: FRUEHAUF
MATERIAL: ALLOY STEEL FINISH: PRIMER
WEIGHT: 2.23 LBS / 1.01 Kg

COTTER PIN
MODEL 1501-4591-SS
1/8" x 3/4"

SUB FOR: PENZ 17-17
MATERIAL: STAINLESS STEEL
FINISH: SELF-COLOR
WEIGHT: 0.05 LBS / 0.03 Kg

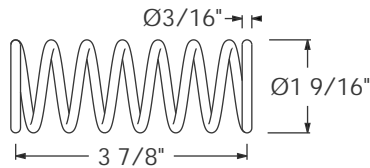
SPLIT ROLL PIN
MODEL 1501-4599-SS
3/16" x 1 1/2"

SUB FOR: PENZ 17-18
MATERIAL: STAINLESS STEEL
FINISH: SELF-COLOR



CLEVIS PIN
MODEL 1501-4611

SUB FOR: PENZ 17-16
MATERIAL: STD CARBON STEEL FINISH: ZINC-PLATED
WEIGHT: 0.054 LBS / 0.025 Kg

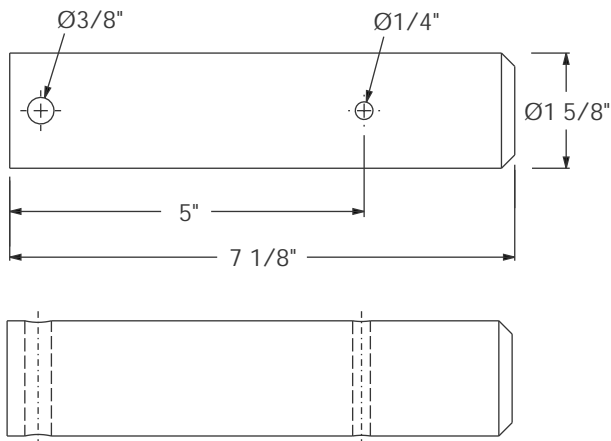


SPRING
MODEL 1501-4613

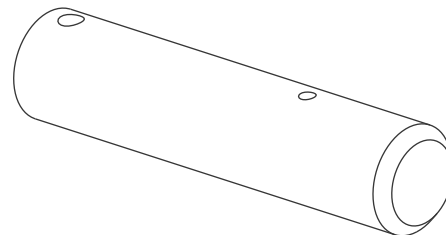
SUB FOR: PENZ 50-24
MATERIAL: STD CARBON STEEL FINISH: SELF-COLOR
WEIGHT: 0.25 LBS / 0.11 Kg

TO ORDER THE COMPLETE
ASSEMBLY USE MODEL 1501-2635-KIT
WHICH INCLUDES 1501-2635 SLIDER PIN,
1501-4611 CLEVIS PIN,
1501-4613 SPRING, 1501-4591-SS COTTER PIN,
AND 1501-4599-SS SPLIT ROLL PIN.

SUB BUFFERS 1501-2635-KIT FOR: PENZ 35-02-KIT
WEIGHT KIT: 2.70 LBS / 1.22 Kg



MODEL 1501-2637



SUB FOR: PENZ 35-03
FITS: GREAT DANE AND HUTCH
MATERIAL: ALLOY STEEL
FINISH: SELF-COLORED
WEIGHT: 4.10 LBS / 1.86 Kg



SLIDER PINS

1500

Ø7/16"

Ø1/4"

5 3/8"

7 1/2"

Ø1 5/8"

MODEL 1501-2638

SUB FOR: PENZ 35-04
 MATERIAL: ALLOY STEEL
 FINISH: PRIMER
 WEIGHT: 4.3 LBS / 1.95 Kg

Ø3/8"

Ø1/4"

5"

7 7/8"

Ø1 5/8"

MODEL 1501-2639

SUB FOR: PENZ 35-05
 FITS: GREAT DANE
 MATERIAL: ALLOY STEEL
 FINISH: PRIMER
 WEIGHT: 4.48 LBS / 2.03 Kg

Ø5/8"

Ø3/8"

3/4"

1 7/8"

3/8"

8 7/8"

Ø2"

MODEL 1501-2681

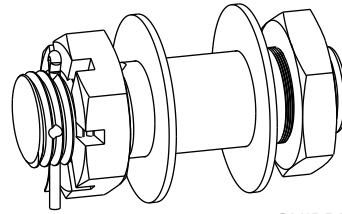
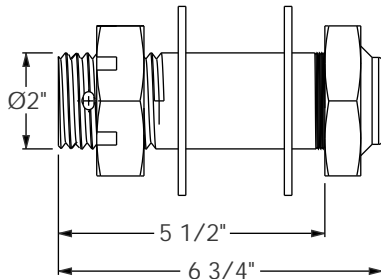
FITS: CHASSIS KING
 MATERIAL: ALLOY STEEL
 FINISH: SELF-COLOR
 WEIGHT: 6.7 LBS / 3.36 Kg



SLIDER PINS

1500

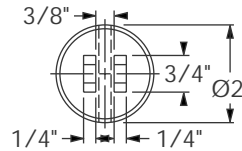
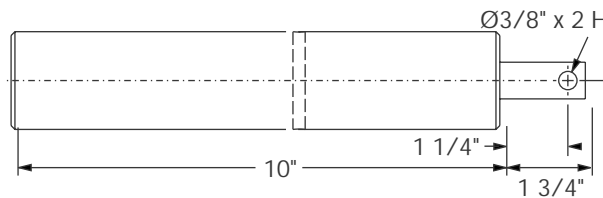
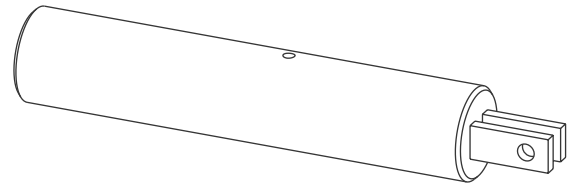
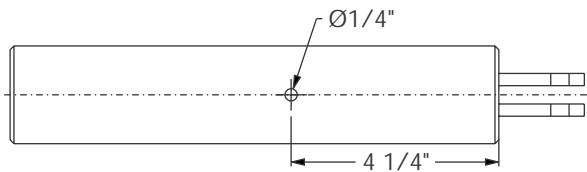
MODEL 1501-6970



SHIPPED AS SHOWN WITH
LOOSE COTTER PIN.

FITS: JINDO 48' & 53' SLIDER CHASSIS
MATERIAL: FAB STEEL / NYLON
FINISH: BLACK PRIMER / SELF-COLOR NYLON
WEIGHT: 8.3 LBS / 3.76 Kg

MODEL 1501-7359



SUB FOR: PENZ 35-12
MATERIAL: FORGED STEEL
FINISH: BLACK PRIMER
WEIGHT: 8.85 LBS / 4.0 Kg



MODEL 1501-6102
PIVOT ARM

SUB FOR: PENZ 35-08
 MATERIAL: FAB STEEL
 FINISH: PRIMER
 WEIGHT: 3.51 LBS / 1.59 Kg

MODEL 1501-6127-1
HANDLE

SUB FOR: PENZ 35-10
 FITS: 1501-6127-2 HANDLE BRACKET
 MATERIAL: FAB STEEL
 FINISH: PRIMER
 WEIGHT: 6.25 LBS / 2.83 Kg

MODEL 1501-6127-2
HANDLE BRACKET

FITS: 1501-6127-1 HANDLE
 MATERIAL: FAB STEEL
 FINISH: PRIMER
 WEIGHT: 1.1 LBS / 0.50 Kg

1500

MODEL 1501-6468
ANGLE BRACKET

SUB FOR: PENZ 02-52
MATERIAL: 3/8" STEEL FINISH: PRIMER
WEIGHT: 1.5 LBS / 0.68 Kg

MODEL 1501-6469
Z - BRACKET

SUB FOR: PENZ 02-53, MAERSK 107094
MATERIAL: 3/8" STEEL FINISH: PRIMER
WEIGHT: 2.0 LBS / 0.9 Kg

MODEL 1501-6470
STOP BLOCK

SUB FOR: MAERSK 105533 FITS: SEALAND
MATERIAL: FAB STEEL FINISH: PRIMER
WEIGHT: 4.79 LBS / 2.17 Kg

MODEL 1501-6471
SLIDER STOP

SUB FOR: PENZ 02-54, MAERSK 105591
MATERIAL: FAB STEEL FINISH: PRIMER
WEIGHT: 2.85 LBS / 1.29 Kg

