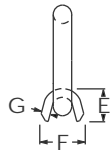
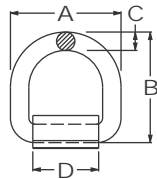




D-RINGS WITH STRAPS

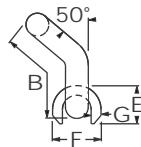
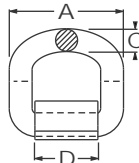


STANDARD TYPE D-RINGS
NOTE: NOT FOR LIFTING

MODEL	DESC.	FINISH	WEIGHT	SWL**	MBS***	D-RING DIMENSIONS			STRAP DIMENSIONS			
						A	B	C	D	E	F	G
2902-6367-1-SC	D-RING	SC*	0.30 LBS 0.14 Kg	3,333 LBS 1,512 Kg	10,000 LBS 4,536 Kg	2 7/16"	2 7/16"	3/8"	1 1/2"	3/4"	1 1/2"	1/4"
2902-6367-2-SC	STRAP	SC*	0.18 LBS 0.08 Kg			62.4 MM	62.6 MM	10 MM	38 MM	19 MM	38 MM	6 MM
2902-7576-1-SC	D-RING	SC*	1.08 LBS 0.49 Kg	6,333 LBS 2,873 Kg	19,000 LBS 8,618 Kg	4 1/4"	4 1/4"	5/8"	2 1/2"	1 3/16"	1 3/4"	3/8"
2902-7576-2-SC	STRAP	SC*	0.61 LBS 0.28 Kg			108.2 MM	108.2 MM	16 MM	63.5 MM	30 MM	44.5 MM	9 MM
2902-6490-1-PR	D-RING	PR*	1.6 LBS 0.73 Kg	9,000 LBS 4,082 Kg	27,000 LBS 12,247 Kg	4 1/2"	4 1/2"	3/4"	2 11/16"	1 5/16"	1 7/8"	3/8"
2902-6490-2-PR	STRAP	PR*	0.74 LBS 0.34 Kg			114.2 MM	114.2 MM	19 MM	68 MM	34 MM	47 MM	9 MM
2902-7399-1-SC	D-RING	SC*	1.8 LBS 0.82 Kg	14,000 LBS 6,350 Kg	42,000 LBS 19,050 Kg	5"	5"	3/4"	3 5/32"	1 3/8"	1 7/8"	3/8"
2902-7399-2-SC	STRAP	SC*	0.87 LBS 0.39 Kg			127 MM	127 MM	19 MM	80 MM	34 MM	47 MM	9 MM
2902-7593-1-SC	D-RING	SC*	2.98 LBS 1.35 Kg	15,667 LBS 7,106 Kg	47,000 LBS 21,319 Kg	5"	5"	1"	2 9/16"	1 11/16"	2 1/8"	7/16"
2902-1578-2-SC	STRAP	SC*	1.17 LBS 0.53 Kg			127 MM	127 MM	25.4 MM	65 MM	43 MM	54 MM	11 MM
2902-1578-1-HDG	D-RING	HDG*	3.6 LBS 1.63 Kg	15,667 LBS 7,106 Kg	47,000 LBS 21,319 Kg	5"	6"	1"	2 9/16"	1 11/16"	2 1/8"	7/16"
2902-1578-1-SC	D-RING	SC*	3.55 LBS 1.61 Kg									
2902-1578-2-HDG	STRAP	HDG*	1.17 LBS 0.53 Kg									
2902-1578-2-SC	STRAP	SC*	1.17 LBS 0.53 Kg									

* SELF-COLOR, HOT DIPPED GALVANIZED, OR PRIMER ** SAFE WORKING LOAD *** MINIMUM BREAK STRENGTH

2900



BENT TYPE D-RINGS
NOTE: NOT FOR LIFTING

MODEL	DESC.	FINISH	WEIGHT	SWL**	MBS***	D-RING DIMENSIONS			STRAP DIMENSIONS			
						A	B	C	D	E	F	G
2902-7614-1-HDG	D-RING	HDG*	3.5 LBS 1.59 Kg	15,000 LBS 6,804 Kg	45,000 LBS 20,412 Kg	5"	5 1/2"	1"	2 9/16"	1 11/16"	2 1/8"	7/16"
2902-1578-2-HDG	STRAP	HDG*	1.17 LBS 0.53 Kg			127 MM	140 MM	25.4 MM	65 MM	43 MM	54 MM	11 MM
2902-1756-1-HDG	D-RING	HDG*	3.85 LBS 1.74 Kg	16,667 LBS 7,560 Kg	50,000 LBS 22,680 Kg	5"	6"	1"	2 9/16"	1 11/16"	2 1/8"	7/16"
2902-1756-1-SC	D-RING	SC*	3.78 LBS 1.71 Kg									
2902-1578-2-HDG	STRAP	HDG*	1.17 LBS 0.53 Kg									
2902-1578-2-SC	STRAP	SC*	1.17 LBS 0.53 Kg									

* SELF-COLOR, HOT DIPPED GALVANIZED, OR PRIMER ** SAFE WORKING LOAD *** MINIMUM BREAK STRENGTH

BUFFERS USA INC
"The Intermodal Hardware Specialists"

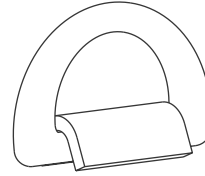
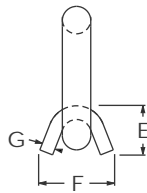
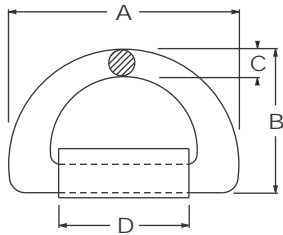


904-696-0010 FAX 904-696-0019

E-mail: sales@buffersusa.com



D-RINGS WITH STRAPS FLOOR CHAIN TIE-DOWNS

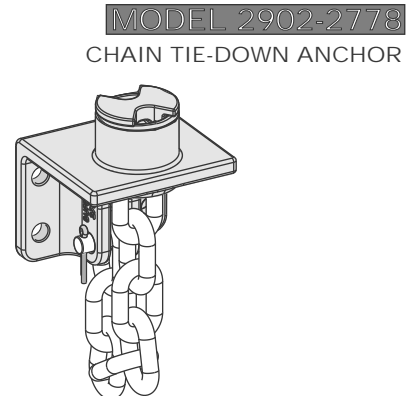
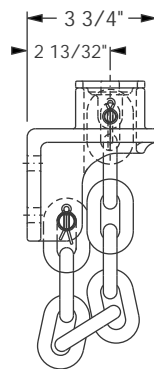
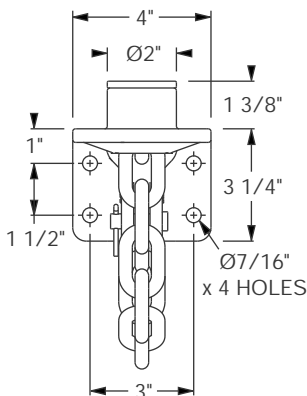


MARINE TYPE D-RINGS
NOTE: NOT FOR LIFTING

MODEL	DESC.	FINISH	WEIGHT	SWL**	MBS***	D-RING DIMENSIONS			STRAP DIMENSIONS			
						A	B	C	D	E	F	G
2902-1160-1-SC	D-RING	SC*	0.70 LBS 0.36 Kg	2,000 LBS 907 Kg	6,000 LBS 2,722 Kg	4 3/4" 120 MM	2 15/16" 74 MM	9/16" 14 MM	3 7/16" 87 MM	1" 25 MM	1 1/4" 32.5 MM	1/4" 7.1 MM
2902-1160-2-HDG	STRAP	HDG*	0.55 LBS 0.27 Kg									
2902-1160-2-SC	STRAP	SC*	0.55 LBS 0.27 Kg									
5012-1741-1-HDG	D-RING	HDG*	5.30 LBS 2.40 Kg	45,195 LBS 20,500 Kg	41 M. TON 90,390 LBS	7 15/16" 202 MM	5 11/16" 143.8 MM	1" 25.4 MM	4" 102 MM	1 15/16" 50 MM	3 3/8" 86 MM	9/16" 15 MM
5012-1741-2-HDG	STRAP	HDG*	2.95 LBS 1.34 Kg									
5012-1854-1-HDG	D-RING	HDG*	5.67 LBS 2.57 Kg	45,195 LBS 20,500 Kg	41 M. TON 90,390 LBS	8 7/8" 225 MM	5 7/16" 138 MM	1" 25.4 MM	4 15/16" 126 MM	1 13/16" 45.8 MM	2 11/16" 68.7 MM	1/2" 12 MM
5012-1854-1-PR	D-RING	PR*	5.67 LBS 2.57 Kg									
5012-1854-2-HDG	STRAP	HDG*	2.77 LBS 1.26 Kg									
5012-1854-2-PR	STRAP	PR*	2.77 LBS 1.26 Kg									
5012-2392-1-HDG	D-RING	HDG*	6.51 LBS 2.95 Kg	55,115 LBS 25,000 Kg	50 M. TON 110,231 LBS	9 1/4" 235 MM	5 3/4" 146.5 MM	1 1/8" 28 MM	5 1/4" 133 MM	2" 50.1 MM	2 15/16" 75 MM	9/16" 14 MM
5012-2392-1-PR	D-RING	PR*	6.52 LBS 2.95 Kg									
5012-2392-2-HDG	STRAP	HDG*	3.13 LBS 1.42 Kg									
5012-2392-2-PR	STRAP	PR*	3.08 LBS 1.40 Kg									

* SELF-COLOR, HOT DIPPED GALVANIZED, OR PRIMER ** SAFE WORKING LOAD *** MINIMUM BREAK STRENGTH

2900



STAINLESS STEEL COVER PLATE
ALLOY STEEL CLEVIS PINS (2 PCS)
STAINLESS STEEL COTTER PINS (2 PCS)
3/8" (10 MM) ALLOY STEEL GR 70 CHAIN

WEIGHT: 5.87 LBS / 2.66 Kg

WORKING LOAD LIMIT (WLL): 5,400 LBS / 2,449 Kg

BUFFERS USA INC
"The Intermodal Hardware Specialists"



904-696-0010 FAX 904-696-0019

E-mail: sales@buffersusa.com