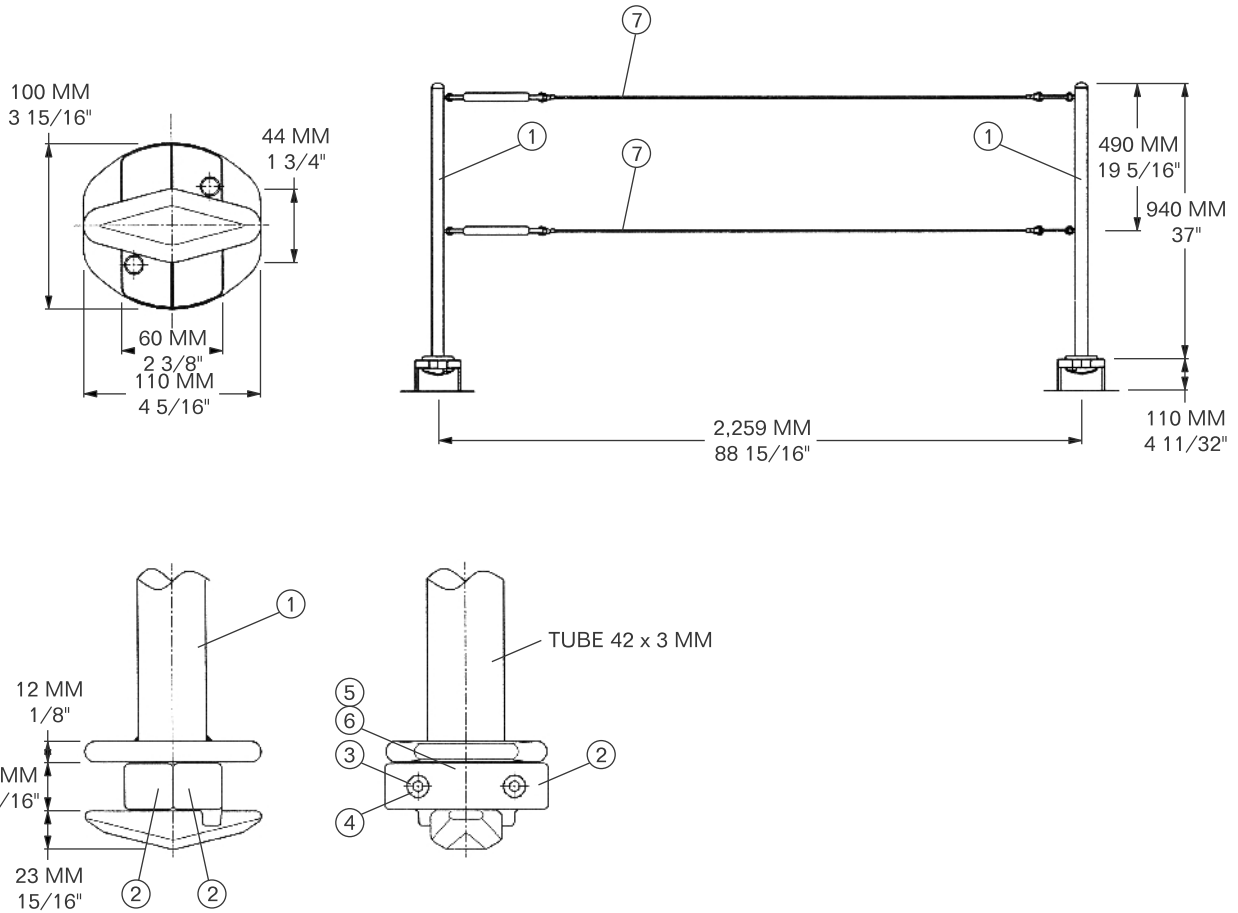




MODEL 5014-SR-1

USED NEXT TO OPEN HATCH
COVER AS FALL PROTECTION



ITEM	QTY	MODEL	DESCRIPTION	WEIGHT
1	2	5014-SR-1/1-6	PIPE ASSEMBLY	2.70 Kg / 5.95 LBS
2	4	5006-C12C-1	HOUSING HALF	0.32 Kg / 0.70 LBS
3	4	5006-C12C-2	SCREW MC6S 8 x 45	0.02 Kg / 0.05 LBS
4	4	1110-4519	HEX NUT M8	0.01 Kg / 0.02 LBS
5	2	1110-4501	DETENT BALL	0.01 Kg / 0.02 LBS
6	2	5002-C19A-5	DETENT SPRING	0.01 Kg / 0.01 LBS
7	2	5014-SR-1/7-12	CABLE ASSEMBLY W TURNBUCKLE	1.68 Kg / 3.70 LBS

5014-SR-1 WEIGHT: 10.2 Kg / 22.5 LBS

