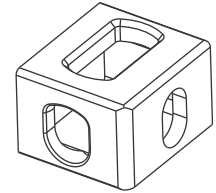
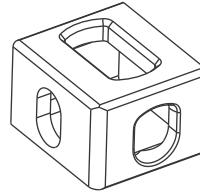


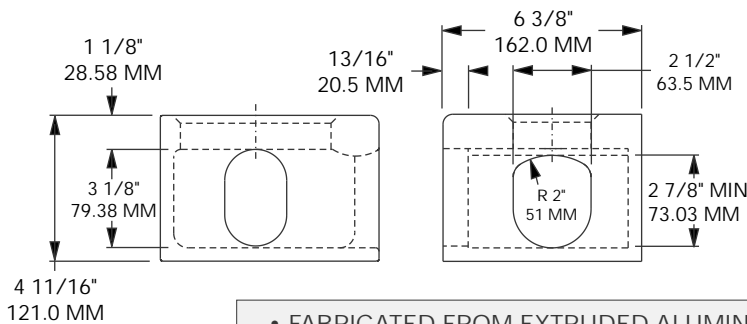
MODEL 6201-1142-TL

MODEL 6201-1142-TR



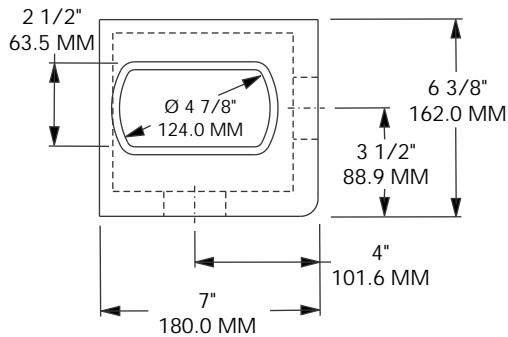
MODEL 6201-1142-TL
TOP LEFT

MODEL 6201-1142-TR
TOP RIGHT



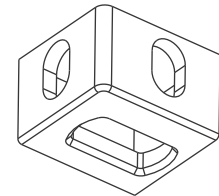
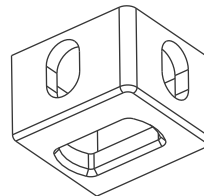
MATERIAL: ALUMINUM AL-ZN5-Mg1
FINISH: AS MACHINED
WEIGHT: 9.9 LBS / 4.5 Kg

- FABRICATED FROM EXTRUDED ALUMINUM CHANNELS.
- MACHINED ON ALL 6 SIDES FOR CLOSE TOLERANCE.
- LIGHT WEIGHT 9.9 LBS PER FITTING.
- MEETS ALL SIZE AND STRENGTH REQUIREMENTS OF ISO 1161.



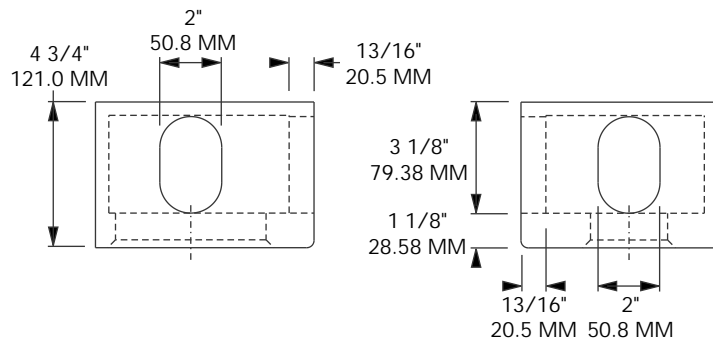
MODEL 6201-1142-BL

MODEL 6201-1142-BR



MODEL 6201-1142-BL
BOTTOM LEFT

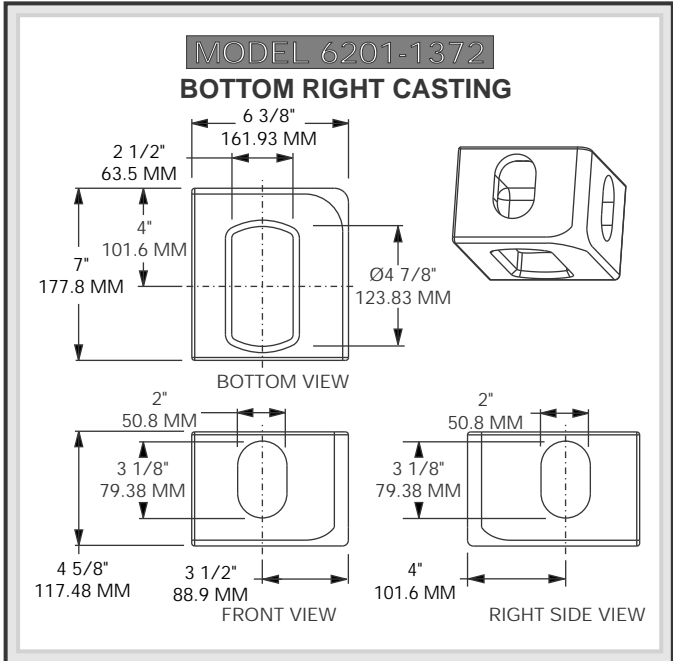
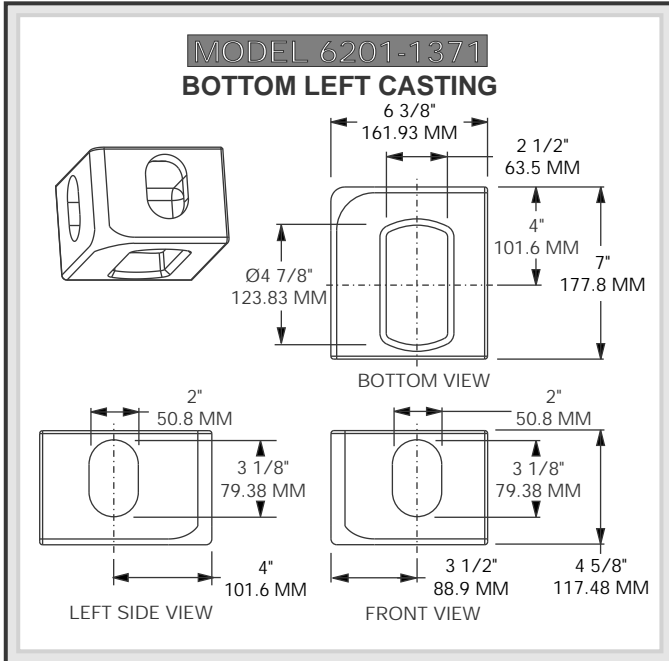
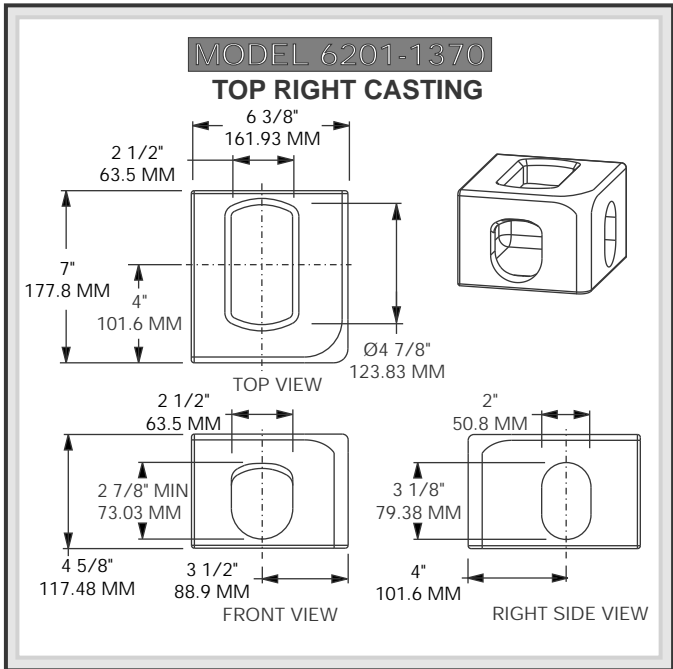
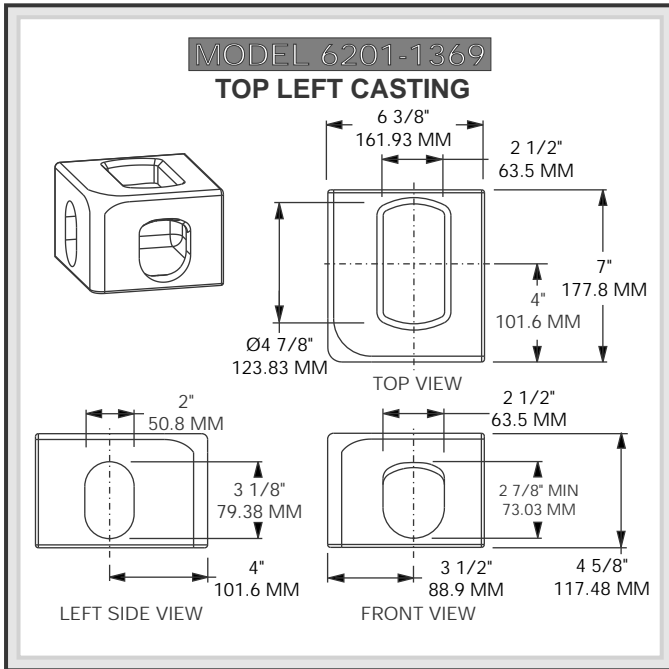
MODEL 6201-1142-BR
BOTTOM RIGHT



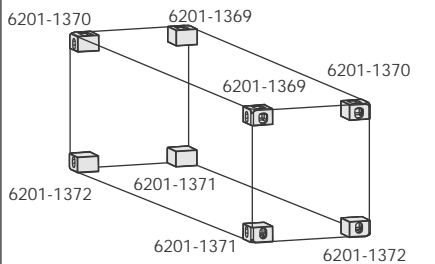
MATERIAL: ALUMINUM AL-ZN5-Mg1
FINISH: AS MACHINED
WEIGHT: 9.9 LBS / 4.5 Kg

6200





6200



NOTE: STANDARD ISO CONTAINERS USE 8 EA. CORNER CASTINGS CONSISTING OF:
 2 PCS TOP LEFT MODEL 6201-1369 WEIGHT: 23.0 LBS / 10.43 Kg
 2 PCS TOP RIGHT MODEL 6201-1370 WEIGHT: 23.0 LBS / 10.43 Kg
 2 PCS BOTTOM LEFT MODEL 6201-1371 WEIGHT: 24.0 LBS / 10.89 Kg
 2 PCS BOTTOM RIGHT MODEL 6201-1372 WEIGHT: 24.0 LBS / 10.89 Kg
 MATERIAL: ASTM A27 GR 70-36 OR EQUIV.
 FINISH: MACHINED ALL SIX SIDES AND SHOT BLASTED

MANUFACTURED IN ACCORDANCE WITH APPROVAL CERTIFICATES BY LLOYD'S REGISTER AND BUREAU VERITAS. CASTINGS MEET REQUIREMENTS OF ISO 1161 FOR ISO CONTAINERS



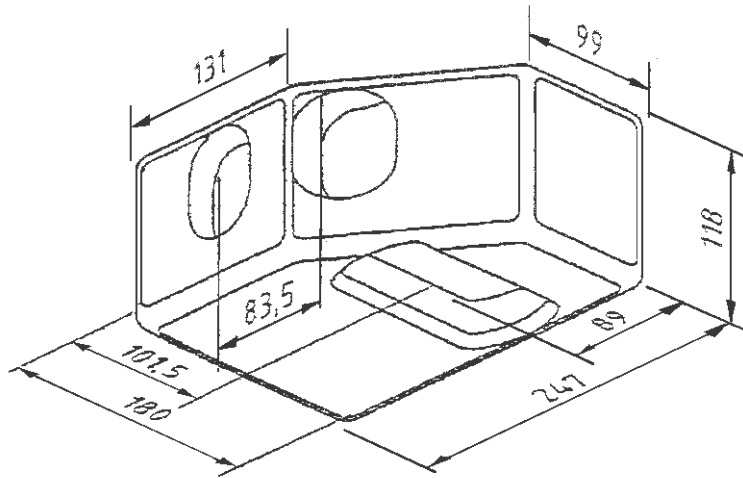


CORNER CASTING A-CORN APERTURE PLUG

MODEL 6201-1612-BR

MODEL 6201-1612-BL

CORNER CASTING
BOTTOM CORNER ONLY



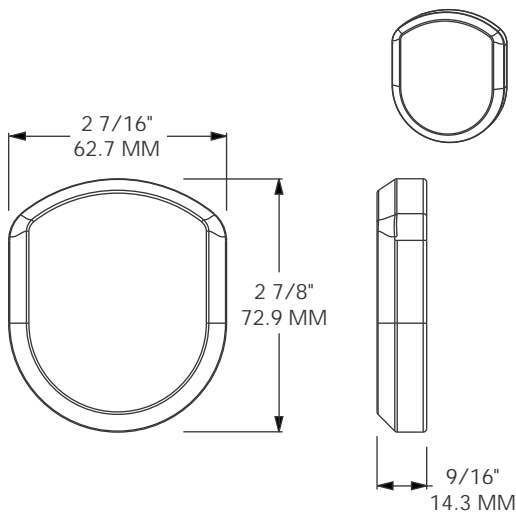
FOR 45' x 8' EURO CONTAINER

RIGHT HAND SHOWN, LEFT IS OPPOSITE

MATERIAL: CAST STEEL
WEIGHT: 29.8 LBS / 13.5 Kg

MODEL 6201-2969

WELD-IN A-CORN APERTURE PLUG



TO PREVENT HOOK LIFTING
IN TOP ISO CORNER CASTINGS

MATERIAL: STEEL FINISH: SELF-COLOR
WEIGHT: 0.89 LBS / 0.4 Kg

6200

BUFFERS USA INC

"The Intermodal Hardware Specialists"



904-696-0010

FAX 904-696-0019

E-mail: sales@buffersusa.com

07/01/09

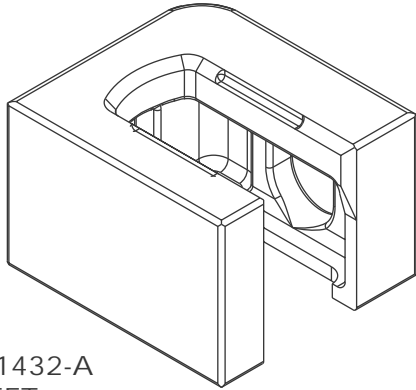
6201-3

SLOTTED CORNER CASTING

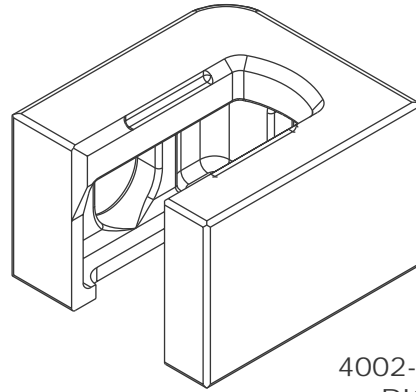
MODEL 4002-1432-A

MODEL 4002-1432-B

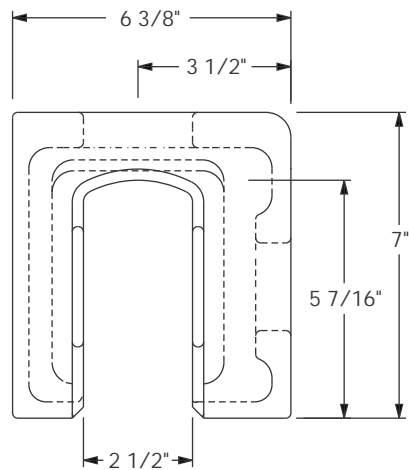
FOR FOLDING END FLATRACKS



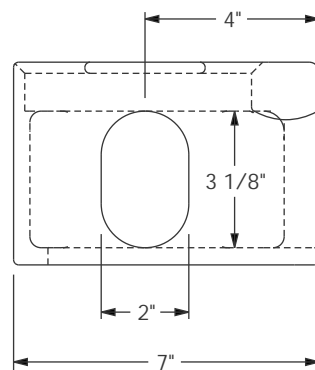
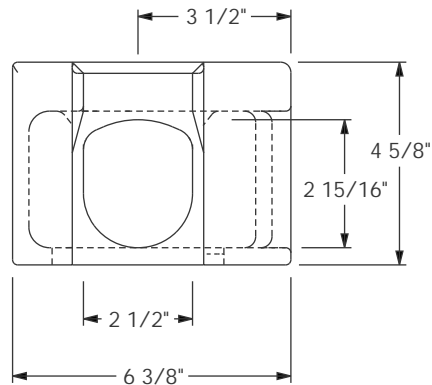
4002-1432-A
LEFT



4002-1432-B
RIGHT



MODEL 4002-1432-A
LEFT CASTING SHOWN,
MODEL 4002-1432-B
RIGHT CASTING IS THE MIRROR OPPOSITE



MATERIAL: CAST STEEL PER ISO 1161 REQUIREMENTS
FINISH: MACHINED ALL SIDES AND SHOT BLASTED

6200

