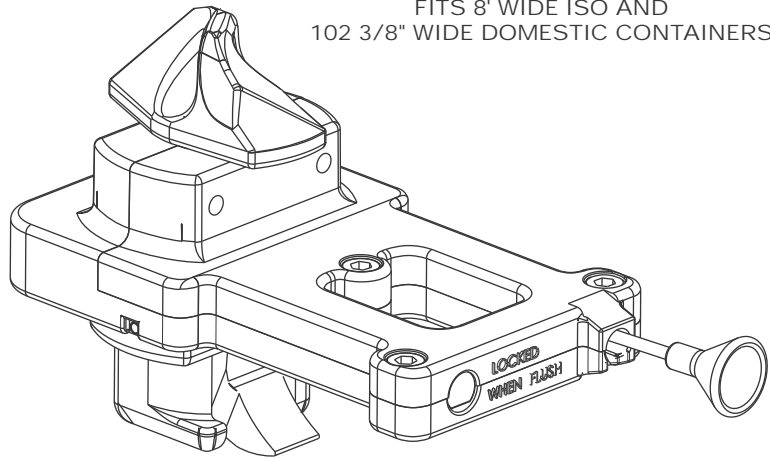
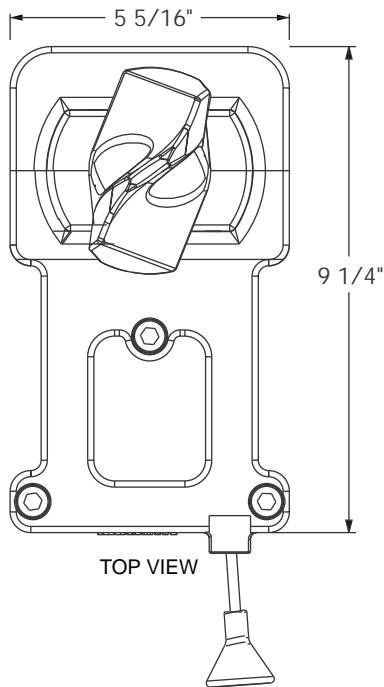




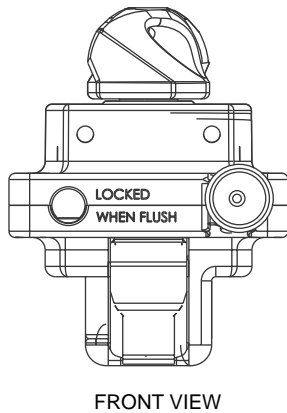
AUTOMATIC IBC WITH DUAL FUNCTION

MODEL 6601-1288

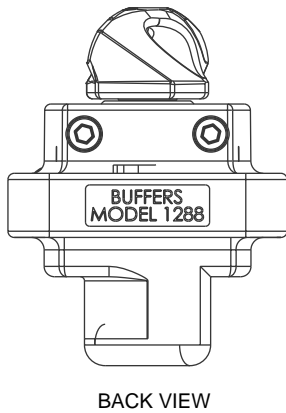
FITS 8" WIDE ISO AND 102 3/8" WIDE DOMESTIC CONTAINERS



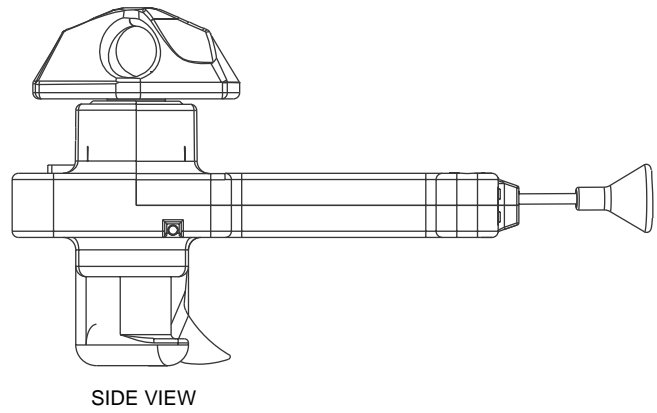
LOCKS AND UNLOCKS AUTOMATICALLY. UPPER TWIST CONE CAN BE MANUALLY OPENED.



FRONT VIEW



BACK VIEW



SIDE VIEW

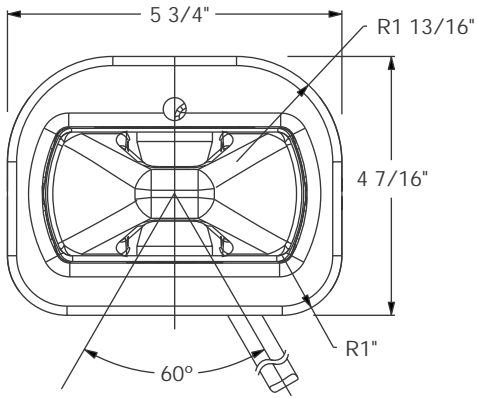
ENGAGEMENT FORCE: MAX 300 LBS
DISENGAGEMENT FORCE: MIN 1,000 LBS
MAX 1,600 LBS
WEIGHT: 16.9 LBS / 7.7 Kg

6600



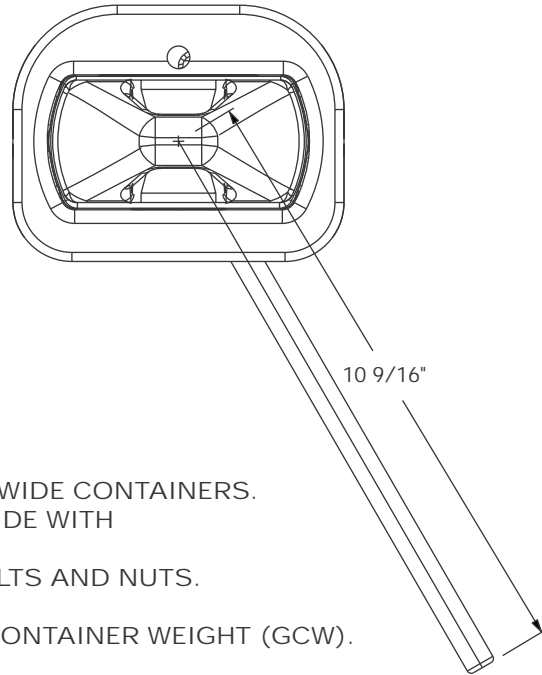
DESIGNED FOR USE ON DOUBLE STACK RAIL CARS.
MEETS AAR-M-998-2008.

MODEL 6601-6961-L

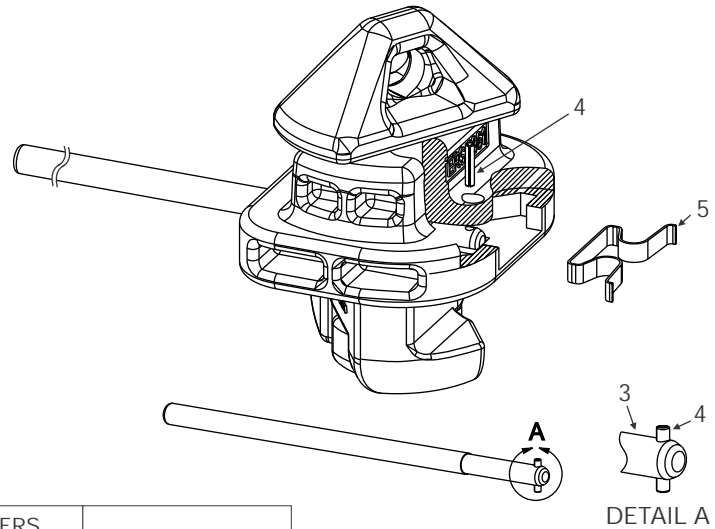
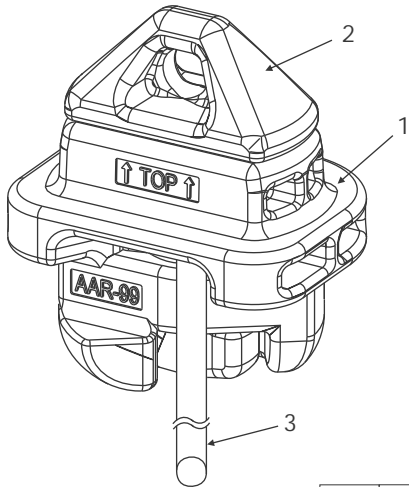


HANDLE SHOWN SHORTENED FOR CLARITY

SHOWN WITH FULL LENGTH HANDLE



- LOCKS TO THE LEFT.
- FITS BOTH STANDARD 96" AND 102" WIDE CONTAINERS.
- HANDLE CAN BE OPERATED FROM SIDE WITH ALUMINUM POLE FROM GROUND.
- FIXED BASE DESIGN ELIMINATES BOLTS AND NUTS.
- CAN NOT BE FITTED UP-SIDE DOWN.
- DESIGNED FOR 80,000 LBS GROSS CONTAINER WEIGHT (GCW).



ITEM	BUFFERS MODEL NO.	DESCRIPTION
1	6601-6961-1-L	HOUSING
2	6601-6961-2	PIN
3	6601-6961-4	HANDLE
4	6601-4663	SPLIT ROLL PIN
5	5005-2936-5	SPRING

WEIGHT: 13.9 LBS / 6.3 Kg

6600