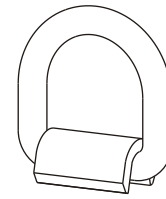
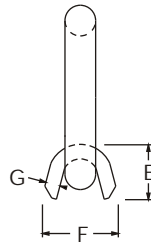
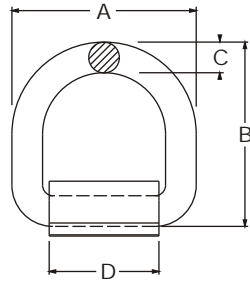


# D-RINGS WITH STRAPS

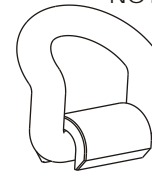
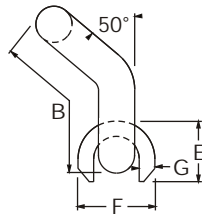
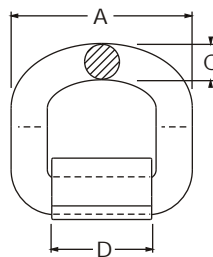


STANDARD TYPE D-RINGS  
NOTE: NOT FOR LIFTING

MODEL NO.	DESC.	FINISH	WEIGHT	SWL**	MBS***	D-RING DIMENSIONS			STRAP DIMENSIONS											
						A	B	C	D	E	F	G								
2902-6367-1-SC	D-RING	SC*	0.30 LBS 0.14 Kg	3,333 LBS 1,512 Kg	10,000 LBS 4,536 Kg	2 7/16"	2 7/16"	3/8"	1 1/2"	3/4"	1 1/2"	1/4"								
2902-6367-2-SC	STRAP	SC*	0.18 LBS 0.08 Kg			62.4 MM	62.6 MM	10 MM	38 MM	19 MM	38 MM	6 MM								
2902-7576-1-SC	D-RING	SC*	1.08 LBS 0.49 Kg	6,333 LBS 2,873 Kg	19,000 LBS 8,618 Kg	4 1/4"	4 1/4"	5/8"	2 1/2"	1 3/16"	1 3/4"	3/8"								
2902-7576-2-SC	STRAP	SC*	0.61 LBS 0.28 Kg			108.2 MM	108.2 MM	16 MM	63.5 MM	30 MM	44.5 MM	9 MM								
2902-6490-1-PR	D-RING	PR*	1.6 LBS 0.73 Kg	9,000 LBS 4,082 Kg	27,000 LBS 12,247 Kg	4 1/2"	4 1/2"	3/4"	2 11/16"	1 5/16"	1 7/8"	3/8"								
2902-6490-2-PR	STRAP	PR*	0.74 LBS 0.34 Kg			114.2 MM	114.2 MM	19 MM	68 MM	34 MM	47 MM	9 MM								
2902-1578-1-HDG	D-RING	HDG*	3.6 LBS 1.63 Kg	16,666 LBS 7,560 Kg	50,000 LBS 22,680 Kg	5"	6"	1"	2 9/16"	2 1/8"	1 11/16"	7/16"								
2902-1578-2-HDG	STRAP	HDG*	1.17 LBS 0.53 Kg																	
2902-1578-2-SC	STRAP	SC*	1.17 LBS 0.53 Kg																	

\* SELF-COLOR, HOT DIPPED GALVANIZED, OR PRIMER \*\* SAFE WORKING LOAD \*\*\* MINIMUM BREAK STRENGTH

2900



BENT TYPE D-RINGS  
NOTE: NOT FOR LIFTING



MODEL NO.	DESC.	FINISH	WEIGHT	SWL**	MBS***	D-RING DIMENSIONS			STRAP DIMENSIONS											
						A	B	C	D	E	F	G								
2902-7614-1-HDG	D-RING	HDG*	3.5 LBS 1.59 Kg	15,000 LBS 6,804 Kg	45,000 LBS 20,412 Kg	5"	5 1/2"	1"	2 9/16"	1 11/16"	2 1/8"	7/16"								
2902-1578-2-HDG	STRAP	HDG*	1.17 LBS 0.53 Kg			127 MM	140 MM	25.4 MM	65 MM	43 MM	54 MM	11 MM								
2902-1756-1-HDG	D-RING	HDG*	3.35 LBS 1.52 Kg	16,667 LBS 7,560 Kg	50,000 LBS 22,680 Kg	5"	6"	1"	2 9/16"	1 11/16"	2 1/8"	7/16"								
2902-1756-1-SC	D-RING	SC*	3.35 LBS 1.52 Kg																	
2902-1578-2-HDG	STRAP	HDG*	1.17 LBS 0.53 Kg																	
2902-1578-2-SC	STRAP	SC*	1.17 LBS 0.53 Kg																	

\* SELF-COLOR, HOT DIPPED GALVANIZED, OR PRIMER \*\* SAFE WORKING LOAD \*\*\* MINIMUM BREAK STRENGTH

