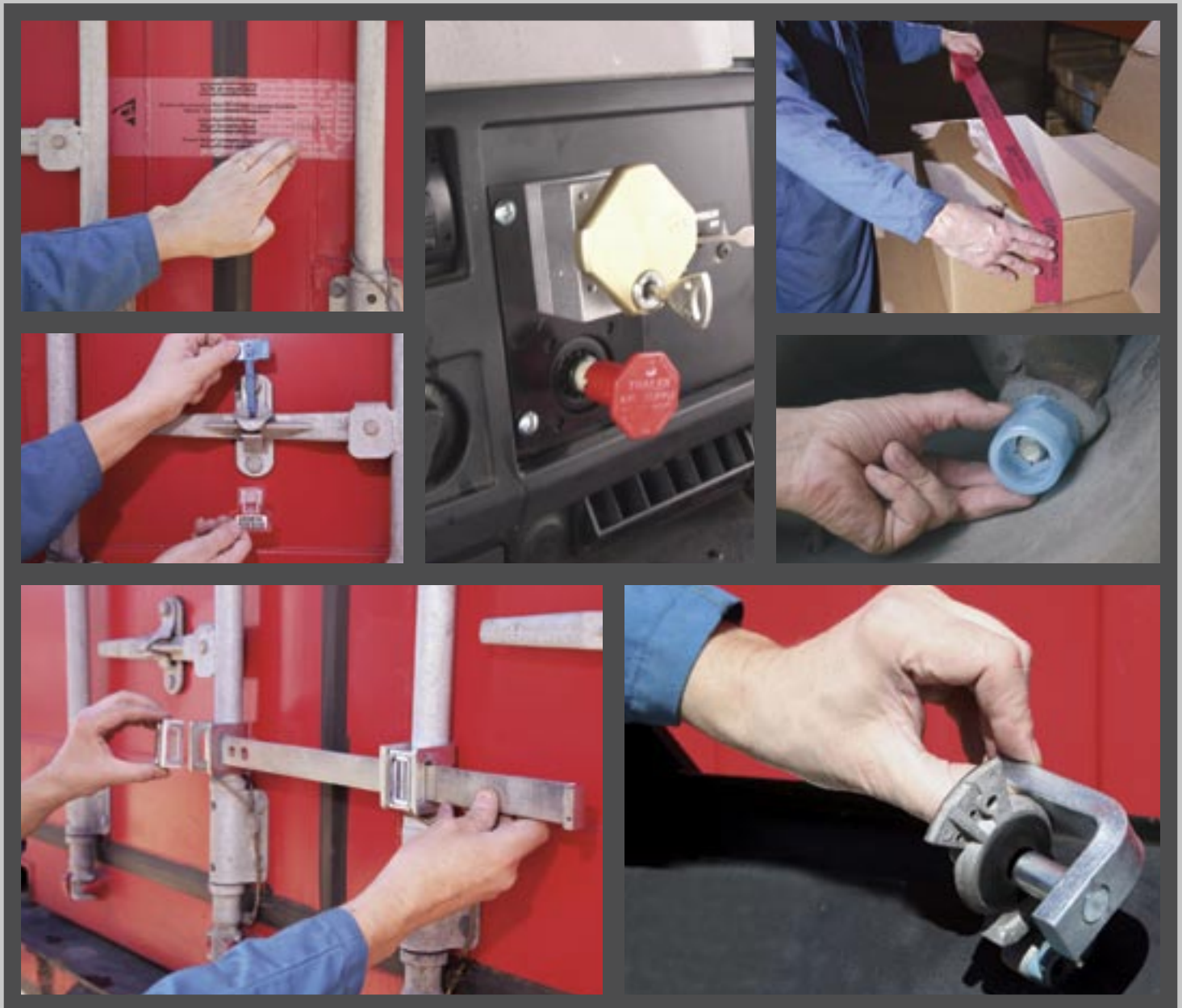


# INTERMODAL ANTI THEFT SOLUTIONS

A COMPLETE LINE OF SECURITY SEALS, LOCKS AND TAMPER TAPE.



**SECURE SHIPPING CONTAINERS, VAN  
TRAILERS, TRACTOR-TRAILERS AND CARGO**  
*At Sea. Over Land. On Rail.*



# ONE-TIME USE SEALS, CLAMPS AND TAMPER TAPE

## • INDICATIVE LABEL SEALS FOR CONTAINERS AND VAN TRAILERS



- Fast, simple, inexpensive solution to indicate unauthorized opening of containers
- Use one seal across both doors
- Removal and attempted replacement of seal results in visible indication of entry
- Strong adhesive qualities and weather-resistant

**PART NO.** 3202-2947  
**PACKAGING:** 250 pcs./roll

## • INDICATIVE PLASTIC BOLT SEALS FOR CONTAINERS AND VAN TRAILERS



- Inexpensive solution with added toughness
- Fast, simple connection to handle latch
- Choice of serialized identifiers or barcodes

PART NO.	TYPE	PACKAGING:
3202-2942	Steel Bolt	30 pcs/box
3202-2943	Plastic Bolt	30 pcs/box

## • BOLT SEALS



- Higher level of protection than indicative plastic seal at economical price
- Available with serial number printed on the barrel only (single print) or on both the barrel and the pin (tandem print) for added security

PART NO.	TYPE	PACKAGING:
3202-2938	Single Print	200 pcs/box
3202-2939	Tandem Print	200 pcs/box
3202-2941	Single Print, Flex Pin	200 pcs/box

## • WIRE CABLE SEALS



- Difficult to cut with bolt cutters
- Many possible connections to secure door rods and latches
- Available in different sizes and lengths

PART NO.	SIZE	PACKAGING:
3202-2944	3/16" x 16"	100 pcs/box
3202-2945	1/16" x 48"	500 pcs/box
3202-2946	1/4" x 45"	50 pcs/box

# ONE-TIME USE SEALS, CLAMPS AND TAMPER TAPE

## • CONTAINER AND TRAILER DOOR LOCKING CLAMP



- When extra security is required
- Easy to fit and lock with minimum slack
- Locking bushing cannot be cut with bolt cutter

- Removed by cutting the clamp with power tool or torch
- Cannot be bent off with crowbar or split with Freon

**PART NO.** 3202-2952  
**PACKAGING:** 10 sets/box

## • INDICATIVE SECURITY TAPE FOR CARGO PACKAGING



- Fast, simple, inexpensive solution to indicate unauthorized opening of packaging

- Removal and attempted replacement of tape results in visible indication of entry

**PART NO.** 3202-2958  
**PACKAGING:** 250'/roll, 60 rolls/box

## • WHEEL LUG NUT INDICATIVE SEAL



- Fast, easy and inexpensive solution helps shippers comply with U.S. Customs requirements to prevent use of tires for contraband smuggling
- Cannot be removed intact and pushed back on threads
- Optional non-removable bar code label on inside cover
- Re-useable until tire is replaced

- Superior design secures lock firmly even on short threads
- Tested and favored by U.S. Customs for functional safety
- Available with or without label

**PART NO.** 3201-1326-NL No Label  
 3201-1326-SL Std. Label  
 3201-1326-SML Barcode Label, Non Peel  
**PACKAGING:** 125 sets/box

# RE-USEABLE SECURITY SOLUTIONS

## • TRAILER AND CONTAINER LOCK ROD HANDLE LOCK



- Ideal for fleets and all owner-operated units
- Prevents turning of the lock rod and the drilling of the handle rivet.
- Very easy to fit and lock with key

- Lock bolt spins and is too short for bolt cutter

**PART NO.** 3202-2950 Complete Set  
 3202-2949 Key Lock Only  
**PACKAGING:** 10 sets/box

## • CONTAINER DOOR LOCK WITH KEY



- Ideal for fleets and all owner-operated units
- Heavy-duty 5-part re-useable lock rod clamp secured with special key-operated lock
- Secures one lock rod on each door to heavy duty flatbar

- Lock bolt spins and is too short for bolt cutters

**PART NO.** 3202-2951 Complete Set  
 3202-2949 Key Lock Only  
**PACKAGING:** 6 sets/box

## • TRAILER DOOR HASP ASSEMBLY



- Ideal for fleets and all owner operated units
- One bracket bolts to each door
- One-time installation
- Utilizes standard key-operated padlocks

- Complete with bolts, nuts and washers

**PART NO.** 3202-2948 Excluding Padlock  
 3202-2847 Padlock Only  
**PACKAGING:** 20 sets/box

# RE-USEABLE SECURITY SOLUTIONS

## • KING PIN LOCK



- Covers king pin with a steel tube that effectively prevents hook up of a van trailer, flatbed or chassis to tractor

- Re-packs in re-useable plastic container to eliminate grease contamination when stored between uses

- Installation clearly indicated with yellow tag identifier

**PART NO.** 3203-2954  
**PACKAGING:** Each

## • GLAD HAND LOCK



- Prevents hook-up of air lines from truck to trailer or chassis

- Very time-consuming to disable by thief

- Compact and sturdy, locks with key

- Very inexpensive "insurance" that should be standard equipment in every truck

- Easy to install and remove by authorized operator/driver

**PART NO.** 3203-2953  
**PACKAGING:** Each

## • LOCK FOR IN-CAB TRACTOR AIR CONTROL



- Prevents unauthorized operation of on-off air pressure knob in tractor cab

- Very effective in preventing theft of entire tractor trailer

- Simple mounting on control panel

**PART NO.** 3203-2955  
**PACKAGING:** Each

- Easy to use: pull knob and turn key to lock

# THE BUFFERS USA ADVANTAGE

- *One-Stop shopping* for all your intermodal anti-theft products
- *Extensive* inventory levels insure high fill rates
- *2 fully stocked warehouses* (Jacksonville, Fl and Los Angeles Ca.) for on-schedule and rush order deliveries
- *High quality* products at *value* pricing
- *Extensive distributor network* throughout North and South America
- *Knowledgeable, responsive* customer service staff
- A market *leader* in the design and manufacture of intermodal hardware, moisture control technology and anti-theft solutions
- *Over 20-years* serving the shipping, container and chassis OEM's and truck parts markets



**BUFFERS USA™** 

*Securing Your Containers. Protecting Your Cargo.*

**Buffers USA Inc.**  
10180 New Berlin Road  
Jacksonville, Florida 32226  
Tel: 904-696-0010 • Fax: 904-696-0019  
Email: [sales@buffersusa.com](mailto:sales@buffersusa.com)  
[www.buffersusa.com](http://www.buffersusa.com)

