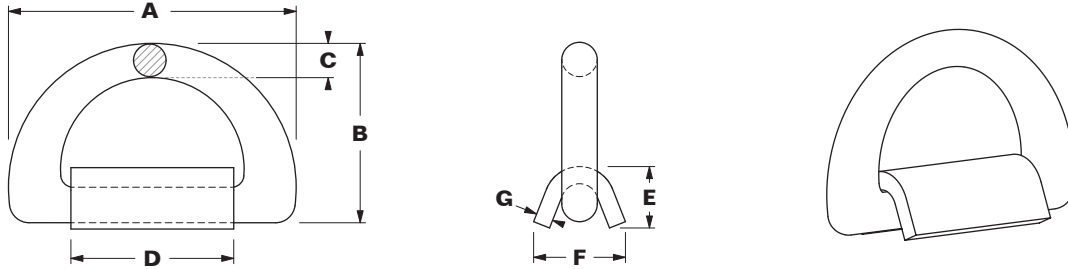


**MARINE TYPE D-RINGS**  
**NOTE: NOT FOR LIFTING**



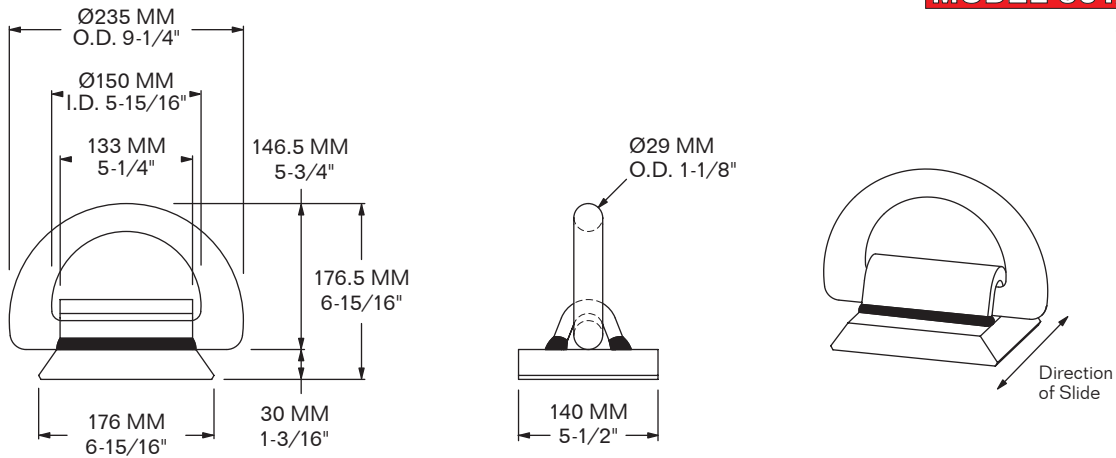
MODEL-FINISH	DESC.	WEIGHT	SWL**	MBS***	D-RING DIMENSIONS			STRAP DIMENSIONS			
					A	B	C	D	E	F	G
2902-1160-1-SC	D-RING	0.34 Kg 0.75 LBS	907 Kg 2,000 LBS	2,722 Kg 6,000 LBS	120 MM 4-3/4"	74 MM 2-15/16"	14 MM 9/16"	87 MM 3-7/16"	25 MM 1"	32.5 MM 1-1/4"	7.1 MM 1/4"
2902-1160-2-HDG	STRAP	0.23 Kg 0.50 LBS									
2902-1160-2-SC	STRAP	0.23 Kg 0.50 LBS									
5012-EPL-ZA-5-1-HDG	D-RING	1.25 Kg 2.76 LBS	10 M. TON 22,045 LBS	20 M. TON 44,091 LBS	138 MM 5-7/16"	137 MM 5-7/16"	20 MM 25/32"	80 MM 3-1/8"	37 MM 1-1/2"	53 MM 2-1/16"	10 MM 13/32"
5012-EPL-ZA-5-1-PR	D-RING	1.20 Kg 2.65 LBS									
5012-EPL-ZA-5-2-HDG	STRAP	0.55 Kg 1.20 LBS									
5012-EPL-ZA-5-2-PR	STRAP	0.50 Kg 1.10 LBS									
5012-1854-1-HDG	D-RING	2.59 Kg 5.70 LBS	20.5 M. TON 45,195 LBS	41 M. TON 90,390 LBS	225 MM 8-7/8"	138 MM 5-7/16"	25.4 MM 1"	126 MM 4-15/16"	45.8 MM 1-13/16"	68.7 MM 2-11/16"	12 MM 1/2"
5012-1854-2-HDG	STRAP	1.32 Kg 2.92 LBS									
5012-7092-1-HDG	D-RING	3.60 Kg 7.93 LBS	25 M. TON 55,115 LBS	50 M. TON 110,231 LBS	240 MM 9-7/16"	151 MM 5-15/16"	32 MM 1-1/4"	140 MM 5-1/2"	50 MM 2"	73 MM 2-7/8"	14 MM 9/16"
5012-7092-1-PR	D-RING	3.52 Kg 7.75 LBS									
5012-7092-2-HDG	STRAP	1.38 Kg 3.05 LBS									
5012-7092-2-PR	STRAP	1.50 Kg 3.32 LBS									
5012-EPL-ZA-3-HDG	D-RING	4.26 Kg 9.4 LBS	25 M. TON 55,115 LBS	50 M. TON 110,231 LBS	248 MM 9-3/4"	155 MM 6-1/16"	REC-TANGULAR 27 W x 38 H MM 1-1/16" x 1-1/2"	120 MM 4-3/4"	47 MM 1-7/8"	69 MM 2-3/4"	15 MM 9/16"
5012-EPL-ZA-3-PR	D-RING	4.24 Kg 9.35 LBS									
5012-ZA-3-AS-PR	STRAP	1.36 Kg 3.00 LBS									

\*\* SAFE WORKING LOAD IS 50% OF MBS  
\*\*\* MINIMUM BREAK STRENGTH IN METRIC TON

**FINISH:**  
SC - Self-Color  
HDG - Hot-Dip Galvanized  
PR - Primer

## MODEL 5012-2152

55° BASE



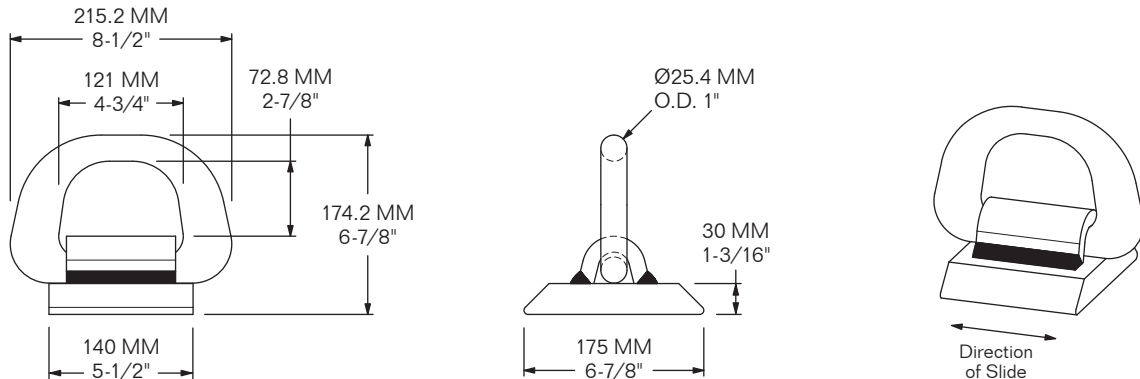
**FITS INTO 55° DOVETAIL TWISTLOCK FRAME  
NOT MADE FOR LIFTING - FOR TIE-DOWN PURPOSES ONLY**

**MIN. B.L. TENSION: 40 M. TON  
MIN. B.L. SHEAR: 40 M. TON**

**MATERIAL: FORGED STEEL  
FINISH: HOT-DIP GALVANIZED  
WEIGHT: 9.6 Kg / 21.2 LBS**

## MODEL 5012-2260

45° BASE



**FITS INTO 45° D5A DOVETAIL TWISTLOCK FRAME  
NOT MADE FOR LIFTING - FOR TIE-DOWN PURPOSES ONLY**

**MIN. B.L. TENSION: 40 M. TON  
MIN. B.L. SHEAR: 40 M. TON**

**MATERIAL: STEEL / FORGED STEEL  
FINISH: HOT-DIP GALVANIZED / WELDABLE PRIMER  
WEIGHT: 11.1 Kg / 24.6 LBS**

**MODEL 5012-1668**

**REMOVABLE D-RING  
w/ ISO FIXED BASE**  
fits all Standard  
ISO Apertures

Gravity Latch

Fixed Base

**SAFE WORKING LOAD (SWL):**  
20.5 M. TON / 45,200 LBS

**MIN. BREAK STRENGTH (MBS):**  
41 M. TON / 90,400 LBS

**MATERIAL: STEEL**  
**FINISH: HOT-DIP GALVANIZED (HDG)**  
**WEIGHT: 8.8 Kg / 19.5 LBS**

**TOP VIEW**

**MODEL 5012-1686**

**REMOVABLE PADEYE w/  
CLOVERLEAF BASE**  
fits Cloverleaf Fitting  
5011-1611 ONLY

**SAFE WORKING LOAD (SWL):** 6.125 M. TON / 13,500 LBS

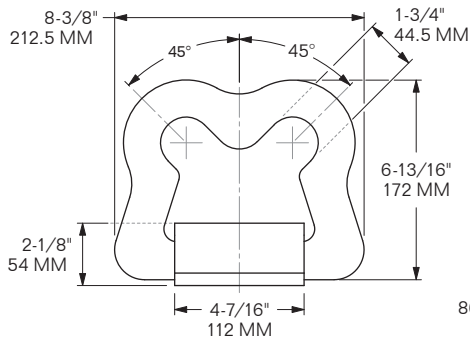
**PROOF LOAD:** 12.25 M. TON / 27,000 LBS

**MIN. BREAK STRENGTH (MBS):** 24.5 M. TON / 54,000 LBS

**MATERIAL: STEEL** **FINISH: HOT-DIP GALVANIZED (HDG)**  
**WEIGHT: 14.5 Kg / 31.9 LBS**

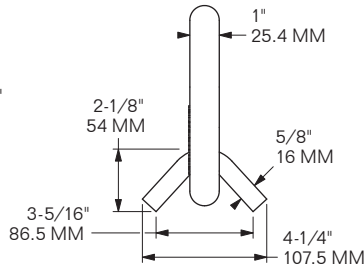
**SECTION A-A**

Gravity Latch  
to prevent rotation  
to removal position



**MBS:** TENSION 31.7 M. TON / 69,800 LBS PULLED AT 45°

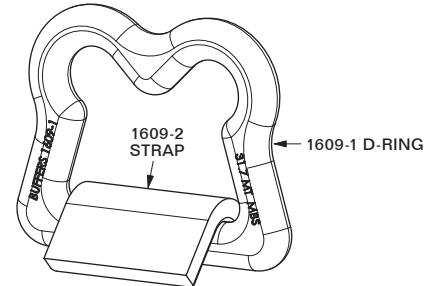
**SUB FOR:** PECK & HALE F198-1-3 **MATERIAL:** FORGED STEEL  
**FINISH:** HOT-DIP GALVANIZED (HDG) or PRIMER (PR)  
**WEIGHT:** D-RING: 6.86 LBS / 3.11 Kg; STRAP: 3.89 LBS / 1.77 Kg



**MODEL 5012-1609-1-HDG**

**MODEL 5012-1609-1-PR**  
**CLOVERLEAF D-RING**

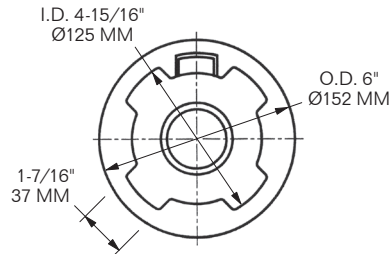
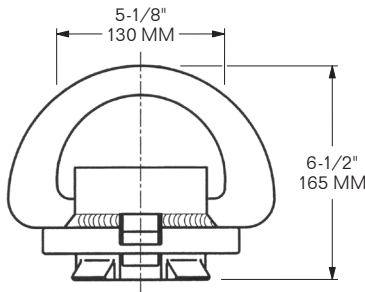
**MODEL 5012-1609-2-PR**  
**STRAP**



**SPECIAL ORDER ONLY**

**MODEL 5012-7813**

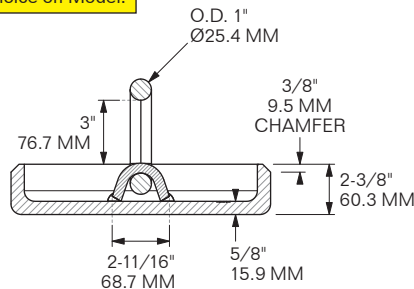
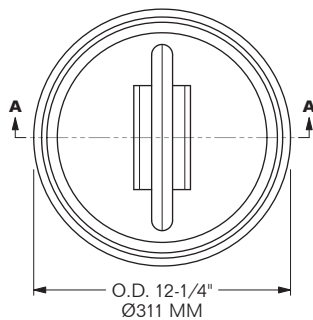
**REMOVABLE D-RING** for  
 4-Flange Breech Base Socket



**MBS:** TENSION 36 M. TON / 79,300 LBS

**SUB FOR:** PECK & HALE F678-36-1 **WORKS WITH:** 5011-7812 SOCKET FRAME  
**FINISH:** HOT DIPPED GALVANIZED (HDG) **WEIGHT:** 14.8 LBS / 6.7 Kg

**D-RING & STRAP SOLD SEPARATELY - Customer's choice on Model.**

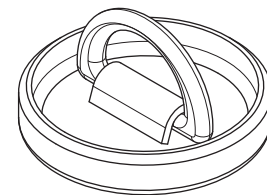


**MBS:** TENSION 20 M. TON / 44,000 LBS  
 IF ONLY WELDED TO DECK AROUND EDGE

**MATERIAL:** CAST STEEL **FINISH:** BLACK PRIMER **WEIGHT:** 31.2 LBS / 14.15 Kg

**MODEL 5012-8080**

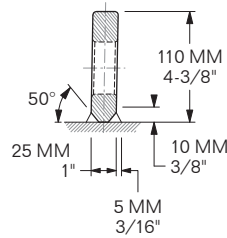
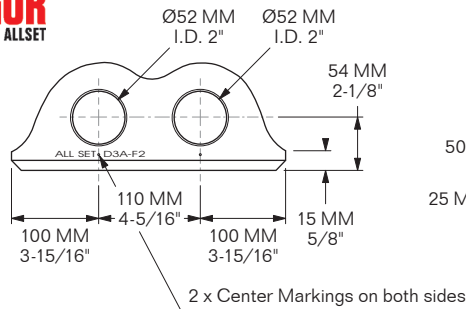
**D-RING BASE PAN**  
 w/o D-Ring



D-RING SHOWN FOR  
 DESIGN PURPOSES ONLY



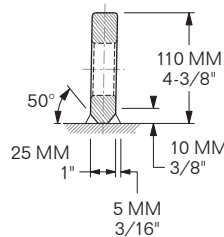
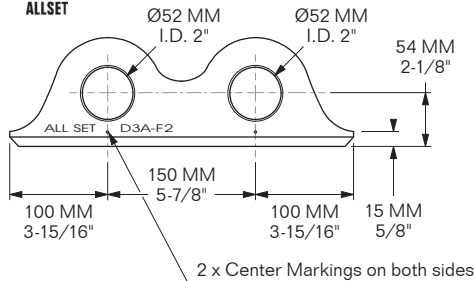
**MODEL 5012-D3A-F2-110**



**MATERIAL:** STEEL PLATE  
**FINISH:** GRAY PRIMER  
**WEIGHT:** 3.8 Kg / 8.4 LBS



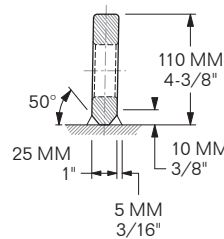
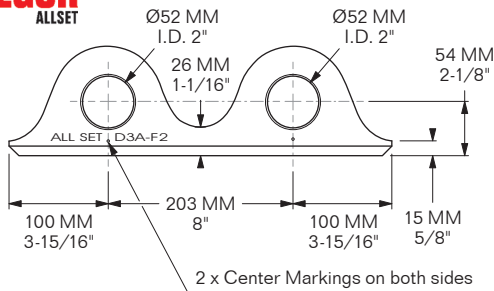
**MODEL 5012-D3A-F2-150**



**MATERIAL:** STEEL PLATE  
**FINISH:** GRAY PRIMER  
**WEIGHT:** 4.4 Kg / 9.7 LBS



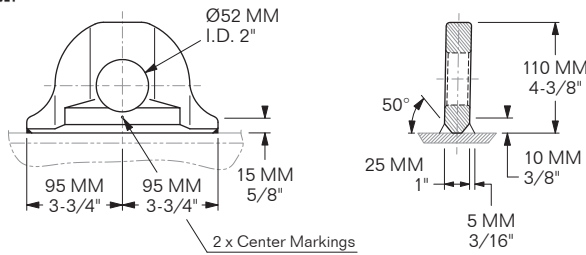
**MODEL 5012-D3A-F2-203**



**MATERIAL:** STEEL PLATE  
**FINISH:** GRAY PRIMER  
**WEIGHT:** 4.5 Kg / 9.9 LBS

**MACGREGOR**  
ALLSET

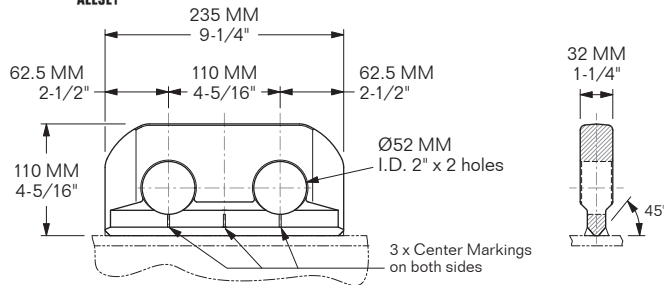
**MODEL 5012-ZP-11**



**SUB FOR:** MACGREGOR 1012760  
**MATERIAL:** STRUCTURAL STEEL  
**FINISH:** PRIMER  
**WEIGHT:** 2.2 Kg / 4.9 LBS

**MACGREGOR**  
ALLSET

**MODEL 5012-ZP-12.1**

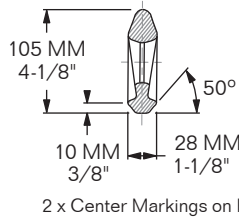
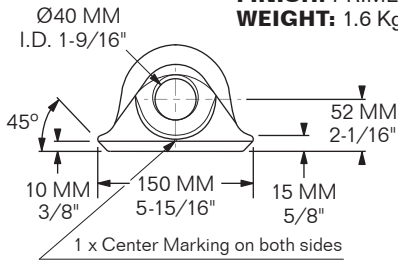


**SUB FOR:** MACGREGOR 1012769  
**MATERIAL:** STRUCTURAL STEEL  
**FINISH:** PRIMER  
**WEIGHT:** 4.2 Kg / 9.3 LBS

**MACGREGOR**  
ALLSET

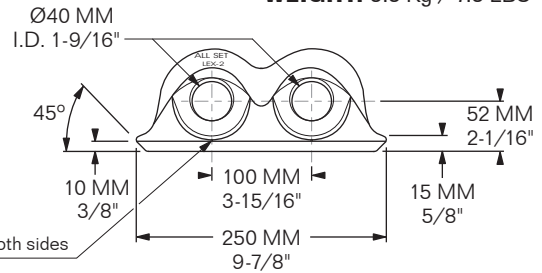
**MODEL 5012-LEX-1-P**

**MATERIAL:** FORGED STEEL  
**FINISH:** PRIMER  
**WEIGHT:** 1.6 Kg / 3.4 LBS



**MODEL 5012-LEX-2-100-P**

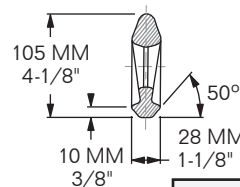
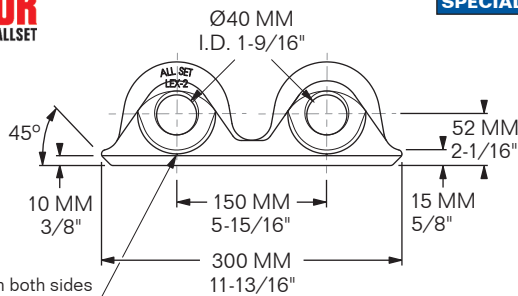
**MATERIAL:** FORGED STEEL **FINISH:** PRIMER  
**WEIGHT:** 3.3 Kg / 7.3 LBS



**MACGREGOR**  
ALLSET

**SPECIAL ORDER ONLY**

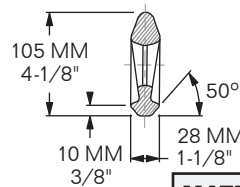
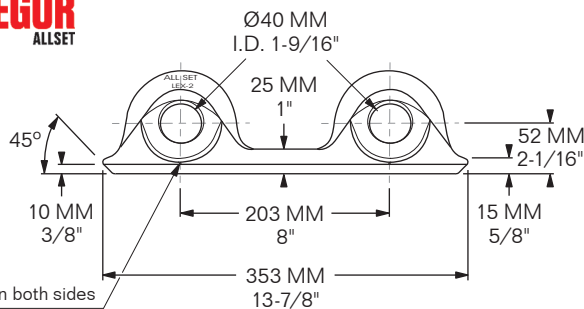
**MODEL 5012-LEX-2-150**



**MATERIAL:** FORGED STEEL  
**FINISH:** PRIMER  
**WEIGHT:** 3.8 Kg / 8.4 LBS

**MACGREGOR**  
ALLSET

**MODEL 5012-LEX-2-203-P**

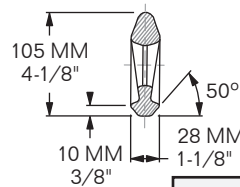
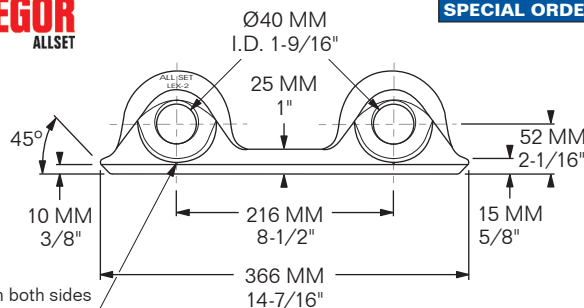


**MATERIAL:** FORGED STEEL  
**FINISH:** PRIMER  
**WEIGHT:** 4 Kg / 8.8 LBS

**MACGREGOR**  
ALLSET

**SPECIAL ORDER ONLY**

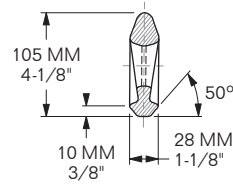
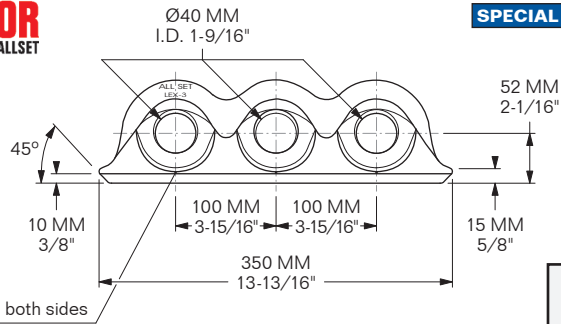
**MODEL 5012-LEX-2-216-P**



**MATERIAL:** FORGED STEEL  
**FINISH:** PRIMER  
**WEIGHT:** 4.1 Kg / 9 LBS



**SPECIAL ORDER ONLY** **MODEL 5012-LEX-3-P**



**MATERIAL: FORGED STEEL** **FINISH: PRIMER**  
**WEIGHT: 5.1 Kg / 11.3 LBS**

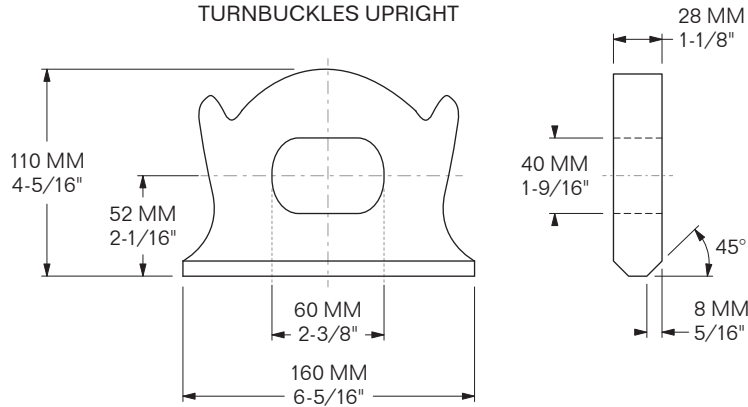






WITH "EARS" TO PARK  
TURNBUCKLES UPRIGHT

#### MODEL 5012-ZP-1N-P



**MIN. B.S.:**  
50 M. TON

**SUB FOR:**  
1072091 (Old model),  
1120773 (New model)

**MATERIAL:**  
HIGH-TENSILE  
STEEL

**FINISH:**  
PRIMER

**WEIGHT:**  
2.4 Kg / 5.3 LBS

#### MODEL 5012-LE-2-100-P

#### MODEL 5012-LE-2-150-P

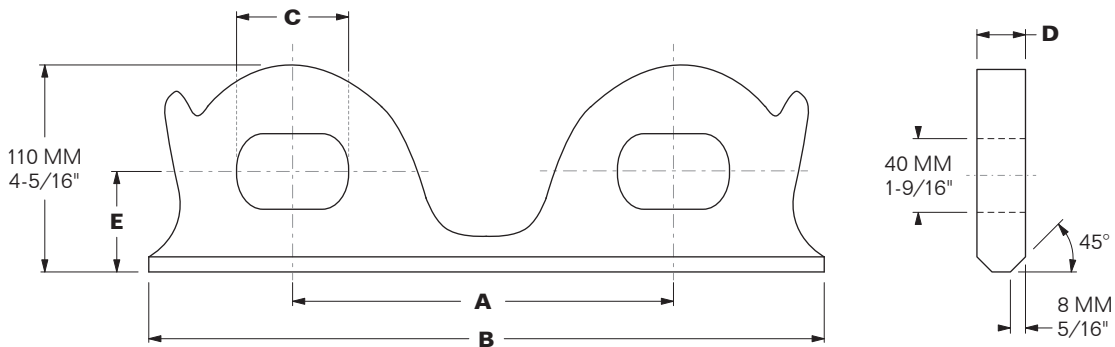
**SPECIAL ORDER ONLY**

#### MODEL 5012-LE-2-260-P

#### MODEL 5012-ZP-2N-203-P

#### MODEL 5012-ZP-2N-216-P

#### MODEL 5012-ZP-2N-260-P



MODEL	A	B	C	D	E	WEIGHT	SUB FOR
<b>5012-LE-2-100-P</b>	100 MM 3-15/16"	260 MM 10-1/4"	52 MM 2-1/16"	25 MM 15/16"	55 MM 2-3/16"	4.2 Kg 9.3 LBS	1120779
<b>5012-LE-2-150-P</b>	150 MM 5-7/8"	310 MM 12-3/16"	52 MM 2-1/16"	25 MM 15/16"	55 MM 2-3/16"	4.9 Kg 10.8 LBS	1120778, K-2126
<b>5012-LE-2-260-P</b>	260 MM 10-1/4"	420 MM 16-9/16"	54 MM 2-1/8"	25 MM 15/16"	55 MM 2-3/16"	5.1 Kg 11.3 LBS	1164076
<b>5012-ZP-2N-203-P</b>	203 MM 8"	363 MM 14-5/16"	60 MM 2-3/8"	28 MM 1-1/8"	52 MM 2-1/16"	5.1 Kg 11.2 LBS	1042140
<b>5012-ZP-2N-216-P</b>	216 MM 8-1/2"	376 MM 14-13/16"	60 MM 2-3/8"	28 MM 1-1/8"	52 MM 2-1/16"	5.2 Kg 11.5 LBS	1042141
<b>5012-ZP-2N-260-P</b>	260 MM 10-1/4"	420 MM 16-1/2"	60 MM 2-3/8"	28 MM 1-1/8"	52 MM 2-1/16"	4.5 Kg 10 LBS	1072088

**MIN. B.S.:**  
50 M. TON

**MATERIAL:**  
HIGH-TENSILE  
STEEL

**FINISH:**  
PRIMER